

MICROWAVE CONCENTRATION MEASUREMENT

μ-ICC 2.45 Compact



- MANUAL -

1	Safety instructions	3
1.1	Symbols and indications	3
1.2	Normal usage	3
1.3	General safety & user warnings.....	3
1.3.1	Environmental conditions.....	4
1.3.2	Electrical.....	4
2	System description μ-ICC 2.45 Compact	5
2.1	Measurement principle	5
2.2	Components.....	7
2.2.1	Evaluation Unit.....	7
2.2.2	Sensor with probes.....	8
2.2.3	Cables	8
2.3	Installation	9
2.3.1	Installation of the Evaluation unit	9
2.3.2	Connections and dimensions of the evaluation unit	9
2.4	Installation recommendations.....	13
2.4.1	Installation with pipe section.....	13
2.4.2	Installation with insertion sensor (example for batch pans).....	14
	Installation with rinsing insertion sensor (for continuous pans).....	15
3	Menu topology and operation handling.....	18
3.1	Standard operation of the compact device.....	18
3.2	Operation via PC Remote.....	20
3.2.1	Connect the PC and Compact unit with USB cable	20
3.2.2	Setting of the parameters with μ -ICC Program remote.....	23
4	Initial Start Up.....	25
4.1	Language	25
4.2	Date and Time	25
4.3	System Reset.....	25
4.4	Locking Keyboard	26
4.4.1	Changing PIN number	26
4.4.2	Keyboard locking	26
4.4.3	Keyboard unlocking	26
5	Initial Sensor Configuration.....	27
5.1	Measurement mode.....	27
5.2	Amplification.....	27
5.3	Measurement	28
5.3.1	Temperature compensation.....	28
5.3.2	Start coefficients.....	28
5.3.3	Reference Point.....	29
5.4	Other Settings	30
5.4.1	Sensor Description.....	30
5.4.2	Current Interface.....	30
6	Data logging.....	31
6.1	SD Card	31
6.2	USB HID	33
7	System Calibration	34
7.1	Sampling.....	34
7.2	Initial Calibration.....	34
7.3	Phase correction with level.....	36
8	Sensor Settings: save and reload	37

8.1	Sensor: Save settings, Load settings, Factory settings	37
8.1.1	Saving the configuration.....	37
8.1.2	Loading the saved configuration	37
8.1.3	Reloading factory settings	37
8.2	Memory allocation: Load and Delete Internal and External Memory.....	37
8.2.1	Copying of configuration.....	37
8.2.2	Deleting of configuration.....	38
8.2.3	Deleting of all memory.....	38
9	Moving of the measurement range.....	39
10	Troubleshooting	40
10.1	PIN is not working.....	40
10.2	Constant offset.....	40
11	Technical specifications.....	41
12	Spare parts	42
13	Declaration of Conformity	43
14	Dimensional drawings	44
14.1	Flat sensors with Inline-Gage DN 40 to 150	44
14.2	Insertion sensor DN65	45
14.3	Rinsed insertion sensor DN65	46
14.4	Insertion sensor DN80	47

1 Safety instructions

1.1 Symbols and indications

In this manual, symbols are used to indicate varying risk levels.



Warning
could be life threatening or cause serious injury



Attention
could cause minor injuries



Notice
possible material damage



Information
application tips and helpful information

1.2 Normal usage

The μ -ICC 2.45 Compact is a measurement system based on microwave transmission technology. To ensure safety, a very low level of microwave radiation is passed through the process stream. The microwave power levels used are completely harmless to humans and the environment. No change of product properties can occur.



This measurement system has been designed according to the most recent safety requirements for microwave devices. If there are legal regulations regarding the use of microwaves, the user has the responsibility to observe them.

It is forbidden to change the frequency of the device. Illicit manipulation of the device could have legal consequences.

1.3 General safety & user warnings

The μ -ICC 2.45 Compact has been built using state-of-the-art technology components and complies with all current safety standards. The housing is certified IP 65 and therefore well adapted for outdoor use. Full testing at the factory ensures proper system function and long term reliability.



The safety and warning notices must be strictly adhered to, so as to guarantee safe operation. Use of the system is only allowed if it is in good order and condition. Only adequately trained personnel must be allowed to operate the system. System redesign or any unauthorized changes might have an impact on product safety and are therefore expressly forbidden.

1.3.1 Environmental conditions

NOTICE

All components should be transported, stocked and operated in a non-corrosive environment.

1.3.2 Electrical

WARNING

The power supply must be disconnected during system installation and service interventions so as to prevent any contact with energized parts.

Before opening the evaluation unit, the power supply must be securely interrupted. It is forbidden to work with the device opened while powered up.

NOTICE

Spare fuses must have the manufacturer specified values. Short circuiting the fuse position or any other manipulation is forbidden!

NOTICE

The evaluation unit must remain grounded when it is mains-connected.

ATTENTION

If fluids have entered the device, it must be immediately disconnected from the power supply. The device must then be thoroughly checked and cleaned by an authorized person.

NOTICE

Without exact knowledge of this manual, no adjustments must be made to the installation or any parameter setting for that matter. Behaviour of the actuator and its influence on the process must also be known.

2 System description μ -ICC 2.45 Compact

The μ -ICC 2.45 Compact is a measuring device which combines compact design with the highest technical standards in microwave measurement. The system concept is based on many years of successful experience with the μ -ICC 2.45 Standard product version.

In addition to a highly compact housing and an improved memory mode, this device offers many new features such as higher class components, USB interface for connection with a PC and an option permitting the use of an additional sample push button. The device is placed in the immediate vicinity of the measurement point, and is directly connected to the microwave sensor probes.

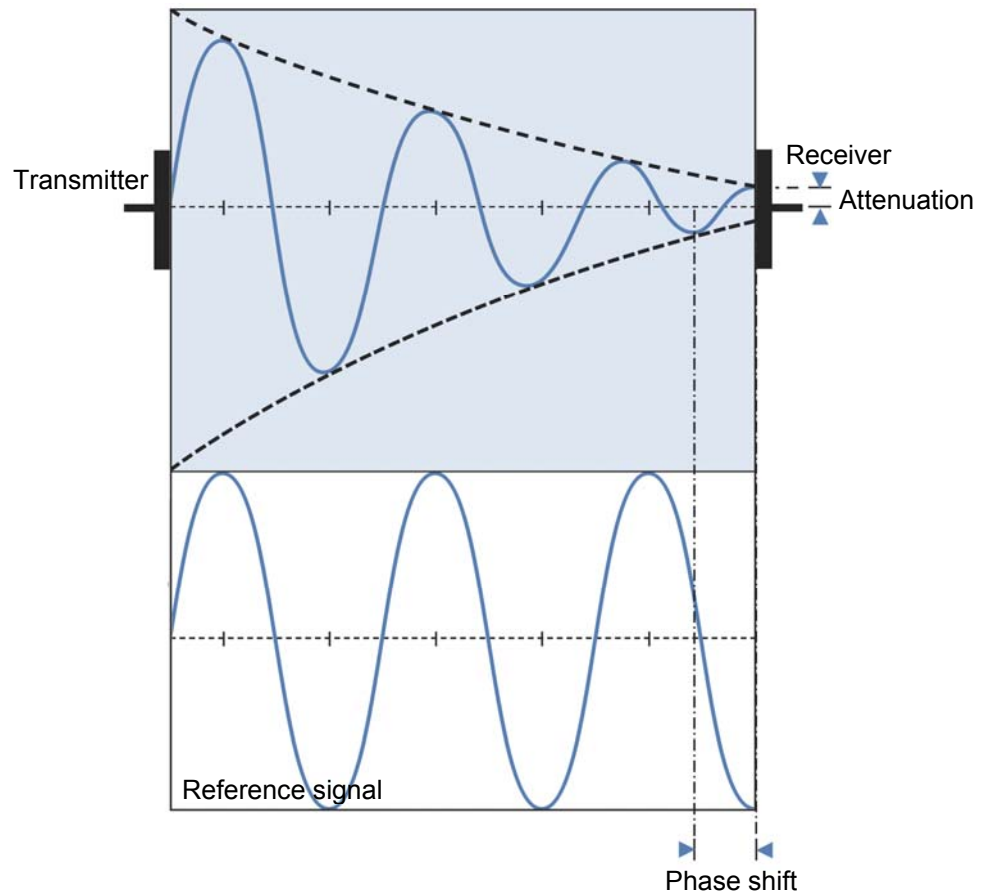
This manual is intended to help you discover the ease of operation and the versatility of this system

2.1 Measurement principle



The measurement uses the dielectric constant of the process sample to measure its total solids content. Water containing samples streams are in general ideal for measurement, because the microwaves are highly absorbed by the free water molecules.

Also of importance is the distance between the sensor probes. The signal strength must be sufficient to pass completely through the sample stream from the transmitter to the receiver. proMtec optimizes the geometry for each application.



- The microwave signal is radiated into the medium by the transmitter. The receiver collects the attenuated microwaves.
- The reference signal represents the original micro-wave signal without the sample stream influences. It is used in comparison with the sample stream attenuated microwave signal to calculate a phase shift (decrease of propagation velocity) or the attenuation of the signal.
- The phase shift occurs proportionally to the propagation velocity
- With this information the water content can be calculated, from which both the density and total dry matter content can be derived.

2.2 Components

The measurement system is composed of two components – the evaluation unit and the sensor modules. The sensor modules are mounted into a pipe section (with flat sensor form) or into a vessel (insertion sensor probes) and are connected via microwave cables with the evaluation unit.



The measurement is – like the Standard version – temperature compensated. A temperature sensor (Pt-100) must be connected for this purpose and is always part of the system.



2.2.1 Evaluation Unit

The standard evaluation unit is fitted with an LCD screen and soft touch buttons for user control. Alternatively a version is available without display. Without LCD screen and soft touch buttons the unit must be accessed with a PC via USB connection.



2.2.2 Sensor with probes

proMtec offers an entire range of sensor types. Depending on the application at hand, proMtec designs the most appropriate sensor type for your process.

Compact versions are either In-line pipe sections, where flat sensor modules are fitted onto the pipe walls and secured with Varivent + Tri-Clamp, or insertion sensors with two probes and a special flange for installation in vessels.

The evaluation unit (compact device) is directly connected with the sensor transmitter through two microwave cables.



2.2.3 Cables



The microwave cables are used to carry the sensor module signal to and from the measurement point. These cables are produced in accordance with the newest technology and are optimally shielded to ensure the lowest possible measurement signal transmission losses.

The cables are delivered with lengths of one to three meters as required. In spite of the special shielding, the cables should be kept as short as possible to ensure the best possible measurement signal quality.



A Pt-100 temperature sensor is integrated into the In-line pipe insert or into the flange of the sensor probes. A four-wire cable must be connected between the already integrated Pt-100 and on the other side with the connectors inside the evaluation unit (read chapter 2.3.2).

2.3 Installation

2.3.1 Installation of the Evaluation unit

The device is delivered with a mounting plate with four fixation tabs (H x B = 120 x 180 mm for \varnothing 6 mm).



Being that the microwave cables must be kept as short as possible the evaluation unit should be installed at an easily accessible location in the immediate vicinity of the measurement point. If no comfortable placement is possible, the unit can also be accessed with your PC from the standard USB port.

2.3.2 Connections and dimensions of the evaluation unit

For an overview of the circuit interconnections and how to connect them, please refer to the following connection list.



Before opening the evaluation unit and connecting any cable, the power supply must be disconnected!



Choose an appropriate location where cables are not under tension!

Do not whip or kink the microwave cables!

While connecting the 4-20 mA signal output pay attention to the polarity! This signal output is a regulated current output.

Do not over tighten the coupling nuts on the evaluation unit too much!



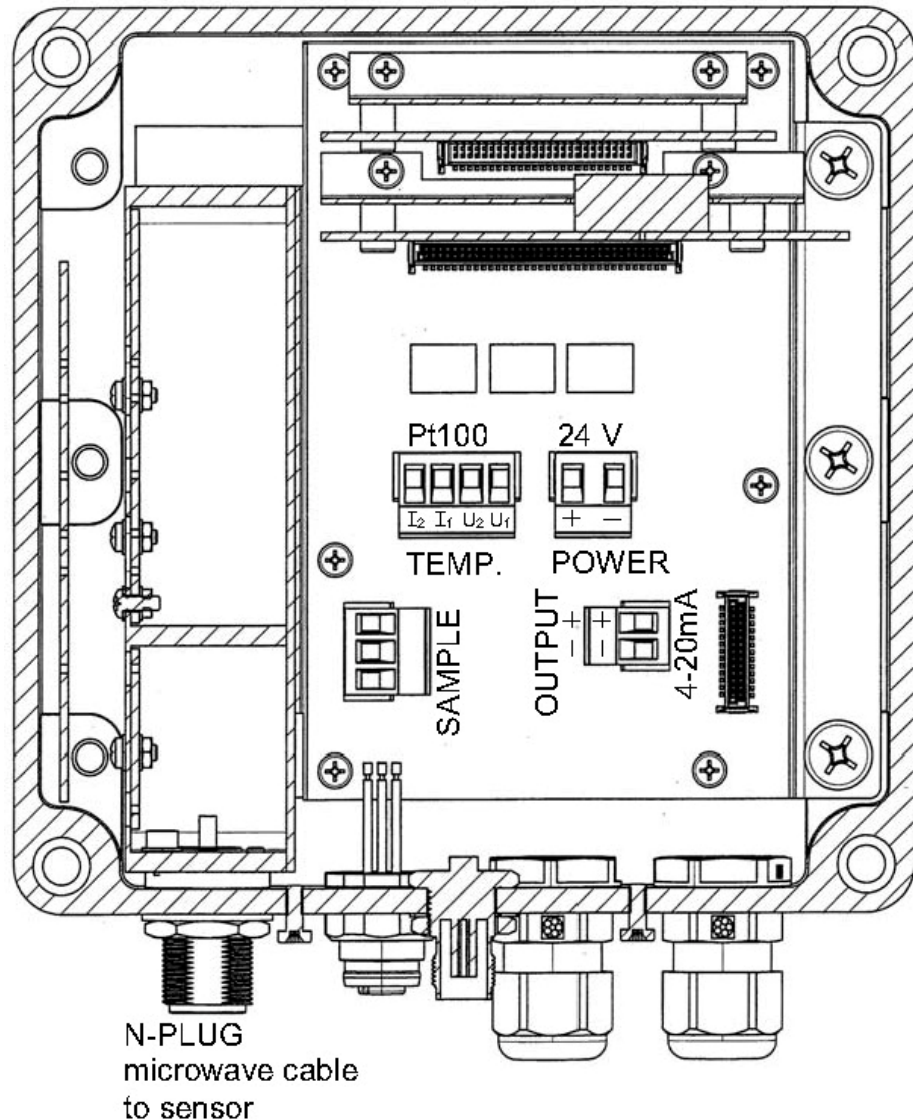
Connections:

- Microwave cables: Two identical microwave cables are provided; one for the transmitter and one for the receiver sensor module. Both have standard N-Plugs and it doesn't matter, which of them is used for the "T"-Plug or the "R"-Plug.

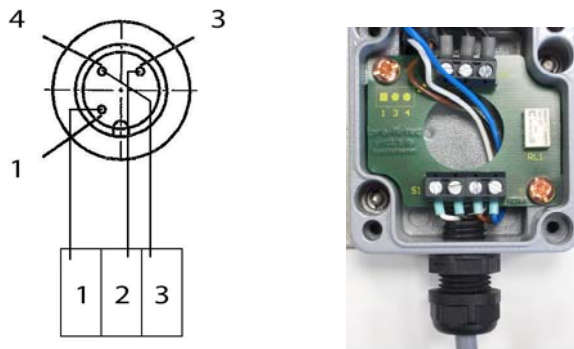
- Pt-100 (4 wire): M12 plug
- Pt-100 (2 wire): Cable entry (M12)
- Power supply: 24 Voltage direct current (cable entry M16)
(If you use 220-240V AC in the factory, you need a transformer for power supply.)

- Signal output: 4 – 20mA (4 wire M12 or cable entry M16)
- Sample push-button: M12 plug
- Data transfer: USB port for connection via PC
- Options: Cable entry (M16)

Connections inside the device:



Connections inside the sample push-button:

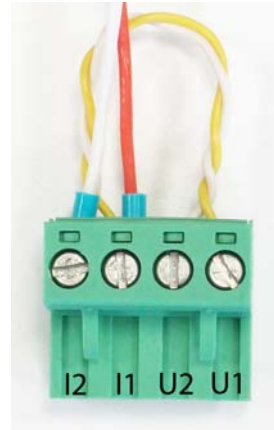


If you're using an insertion sensor, in the basic system there is a Pt-100 with two wire connections. In this case the plug-in is already shunted.

If you want to connect your own two wired Pt-100 you have to shunt I2 with U2 and also I1 with U1, as shown below.



shunted Pt-100 connector



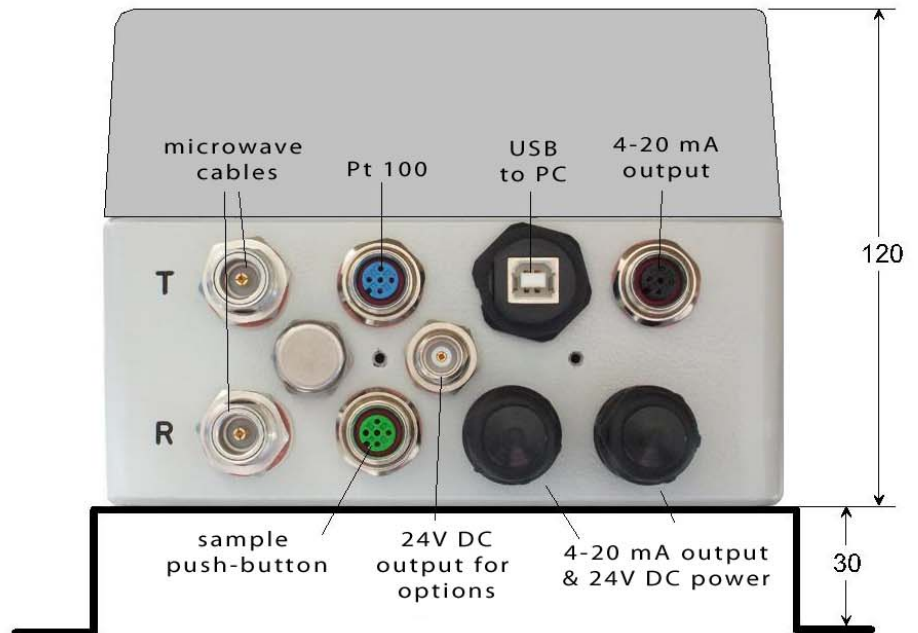
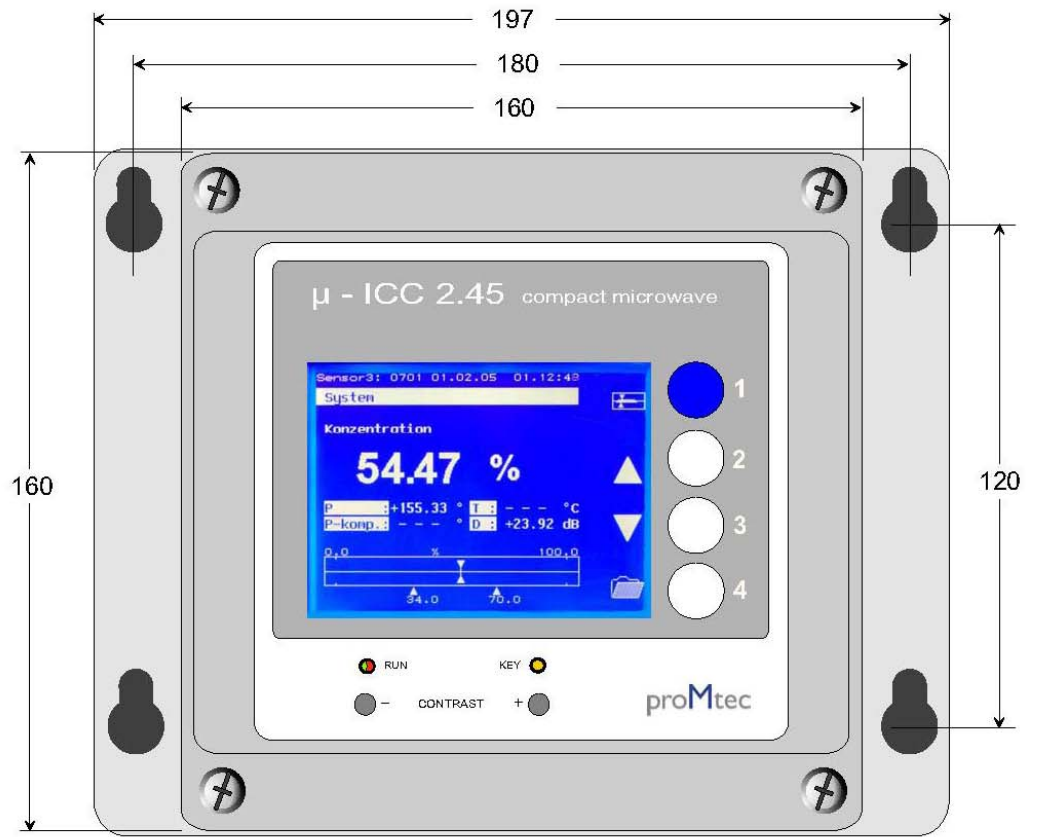
connected 2 wire Pt-100



For further modifications there are four other connectors in the product range, all with different dimensions as shown below.



System description μ -ICC 2.45 Compact



2.4 Installation recommendations

2.4.1 Installation with pipe section



The sensors should be installed in an up-going pipe after a pump if it exists. This installation ensures an air bubble-free product. In addition, the product is more homogenized compared to a tank installation.



2.4.2 Installation with insertion sensor (example for batch pans)



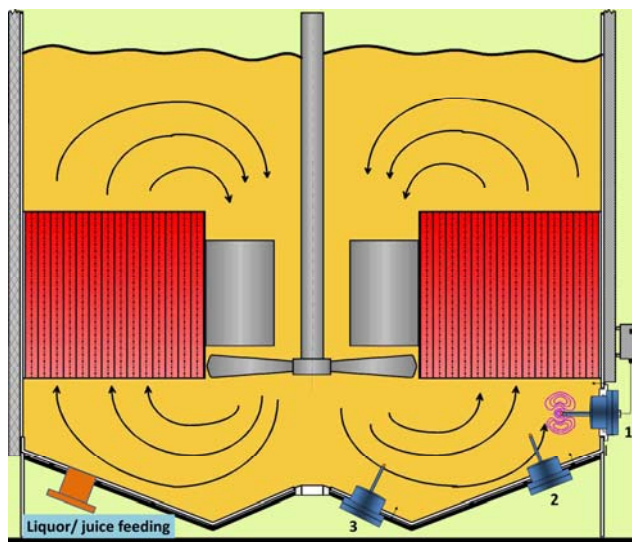
In order to ensure a reliable measurement it is necessary to have a good flow through the sensors. They should be mounted below the calandria. In fact the measurement is influenced by foam and air and/or steam bubbles. Below the calandria there are generally less bubbles. Some calandrias have a sample valve by-pass. It is not suited to install the sensor there because of the very bad magma flow.



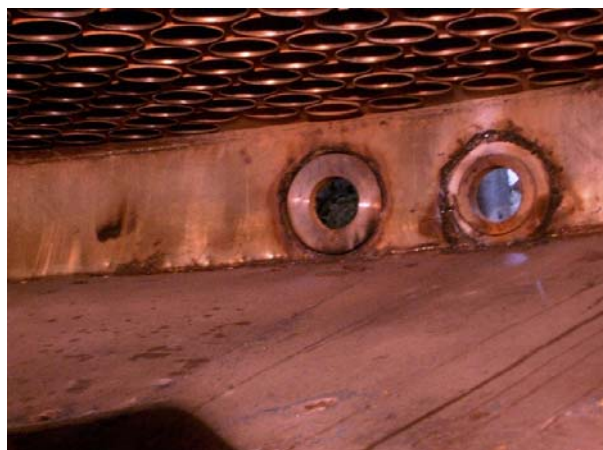
To calibrate correctly, good samples are needed. If you see that the measurement parameters change quickly while taking the sample, first make the reading, then take the sample and then, after a while, confirm that the reading is coming back again.



The following pictures show an installation in the side of wall. It has the advantage that the microwave module is not exposed to a very high temperature. The minimum distance between the calandria and the sensor tips should be 100 mm.



Position of Insertion sensor

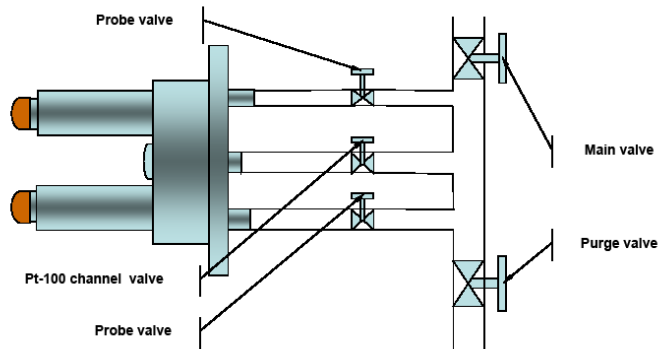


Installation of insertion sensor flange below the calandria

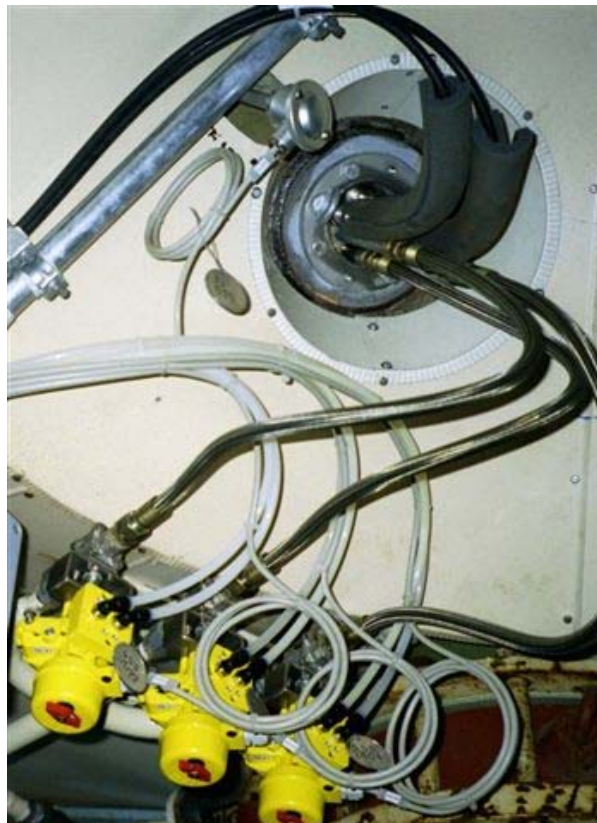
Installation with rinsing insertion sensor (for continuous pans)



As the continuous pans are not submitted to a periodic steaming-out, the proMtec insertion sensors are fitted by CIP (cleaning in place). The cleaning medium can be hot water with high pressure. The 3 rinsing water channels (two for microwave insertion sensors and one for the Pt-100) must be activated one after the other for 10-15 seconds to ensure high pressure and the cleaning time is set 15-20s. The CIP can be preceded manually or automatically. proMtec does recommend the last one. Depending upon the product to be measured, the time between two rinsing cycles can be 2-3 hours for the 1st product, 5-7 hours the 2nd and 9-12 hours for the 3rd.



Rinsed Sensor Picture



Manual and Automatic Valve

System description μ -ICC 2.45 Compact

i

As written above, the measurement reacts on air bubbles. Any leakage in or next to the sensor causes bubbles (vacuum) thus deviating the reading. To check the leakage there are several hints:

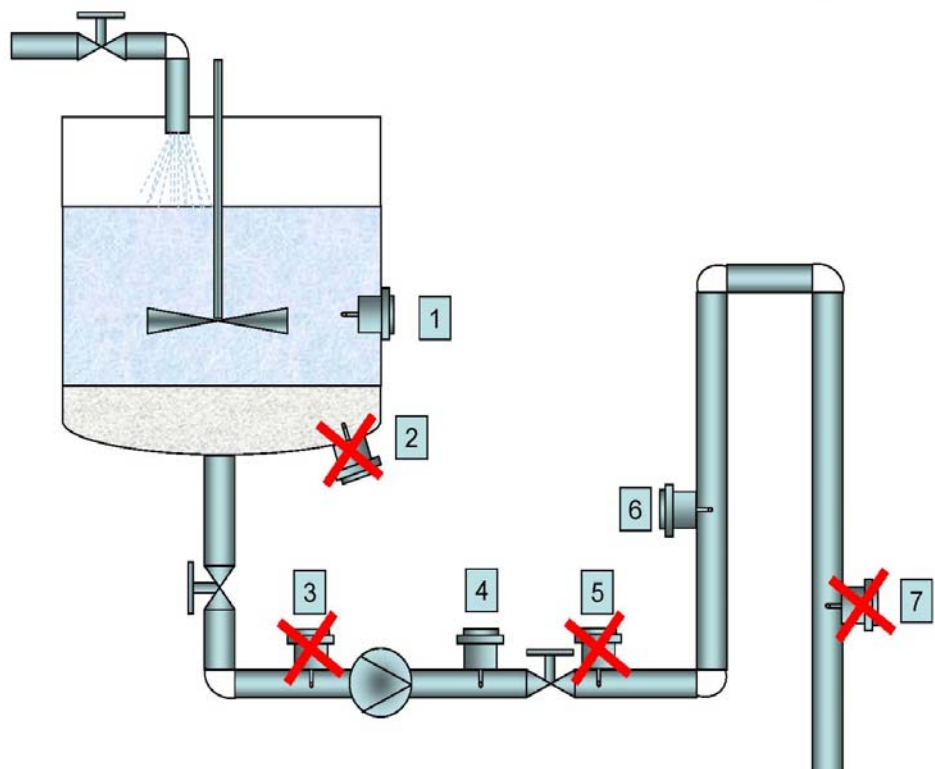
- Rinse of juice below the sensor. This occurs while or after Steaming out
- Shaking of the pan
- Upcoming air bubbles through the magma on the side wall of the pan

i

In order to get a reliable measurement it is necessary to have a steady flow in the immediate vicinity of the sensor. This avoids caking of the sensor probes. If the product should contain any air or steam bubbles, they will influence the measurement. If air bubbles present in the sample stream can create abnormal reflections of the microwaves and therefore an inexact concentration value.

To avoid this, it is recommended to install the sensors in a rising pipe segment after the pump (pump outlet). This installation ensures an air bubble-free sample stream.

Usually the process stream in a tube is more homogeneous than that found in a tank installation.

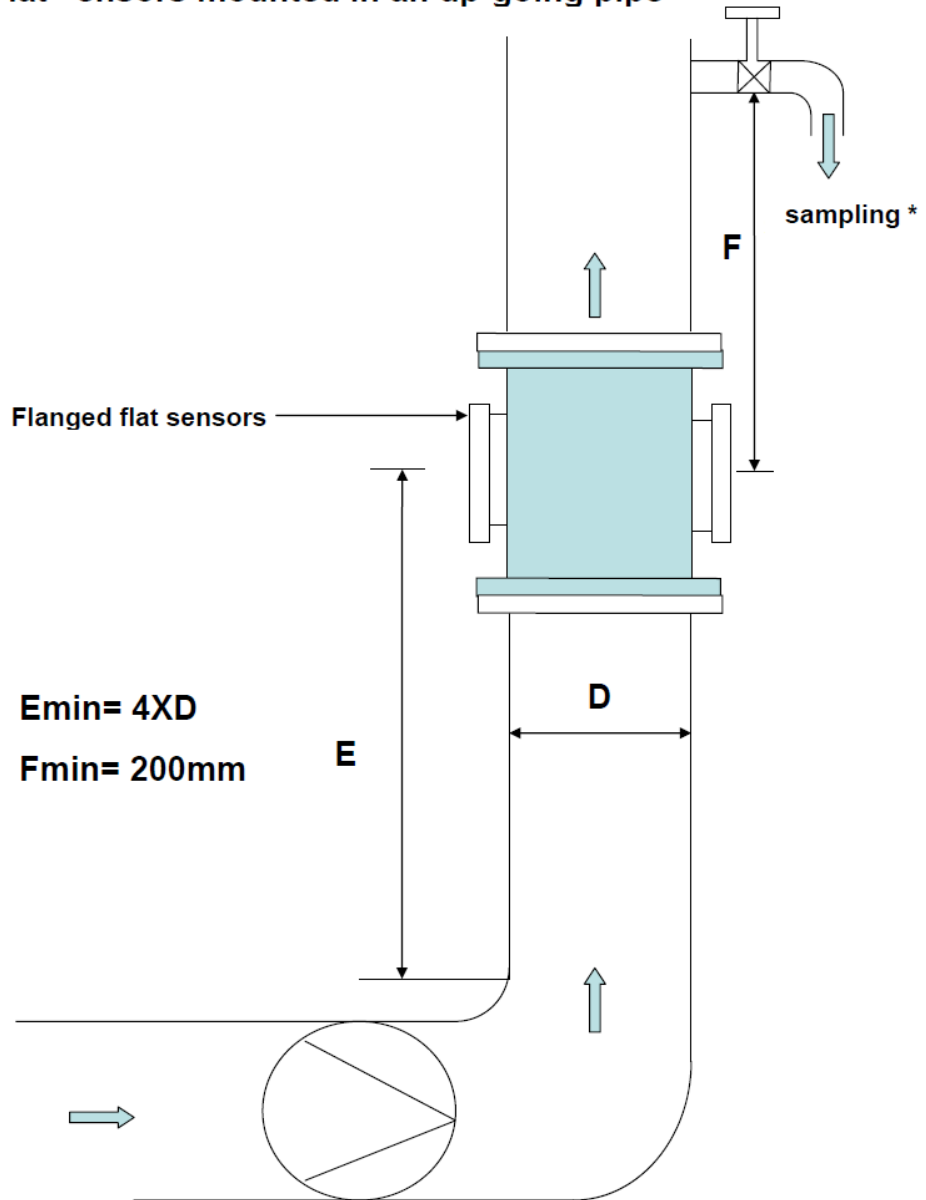


Possible recommended positions for sensor installation



The best installation point in a vertical pipe section, far enough away from the pump and with upward flow direction. The recommended minimum distance from the pump is 4 times of the diameter of the pipe. The pipe must be completely filled by the product stream.

Flat sensors mounted in an up-going pipe



*The sampling valve can be mounted upstream or downstream of the sensors

Recommended position of Insertion sensor on the pipe



When installing insertion sensors on a tank wall, care must be taken to ensure that the sensor remains below the minimum of the process liquid level.

3 Menu topology and operation handling

3.1 Standard operation of the compact device

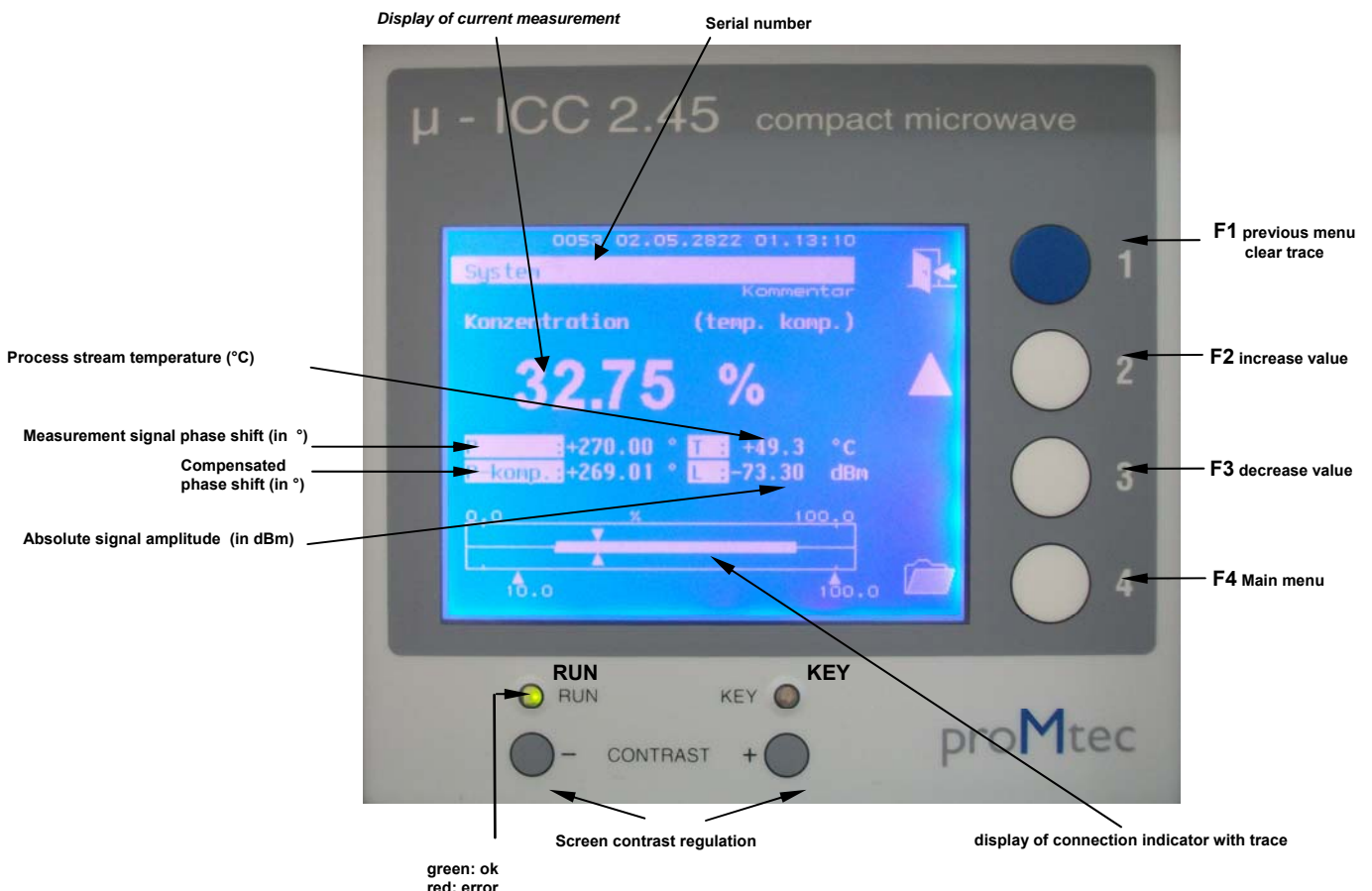
The evaluation unit uses the data from its integrated microwave module. In the μ ICC Standard version the microwave module is a separate system module. A number of helpful values are displayed on the screen; the current measurement value, the phase shift (raw and compensated), the temperature and the level. The values are also presented in bar graph form with trace (drag pointer) which shows the evolution of the measurement.

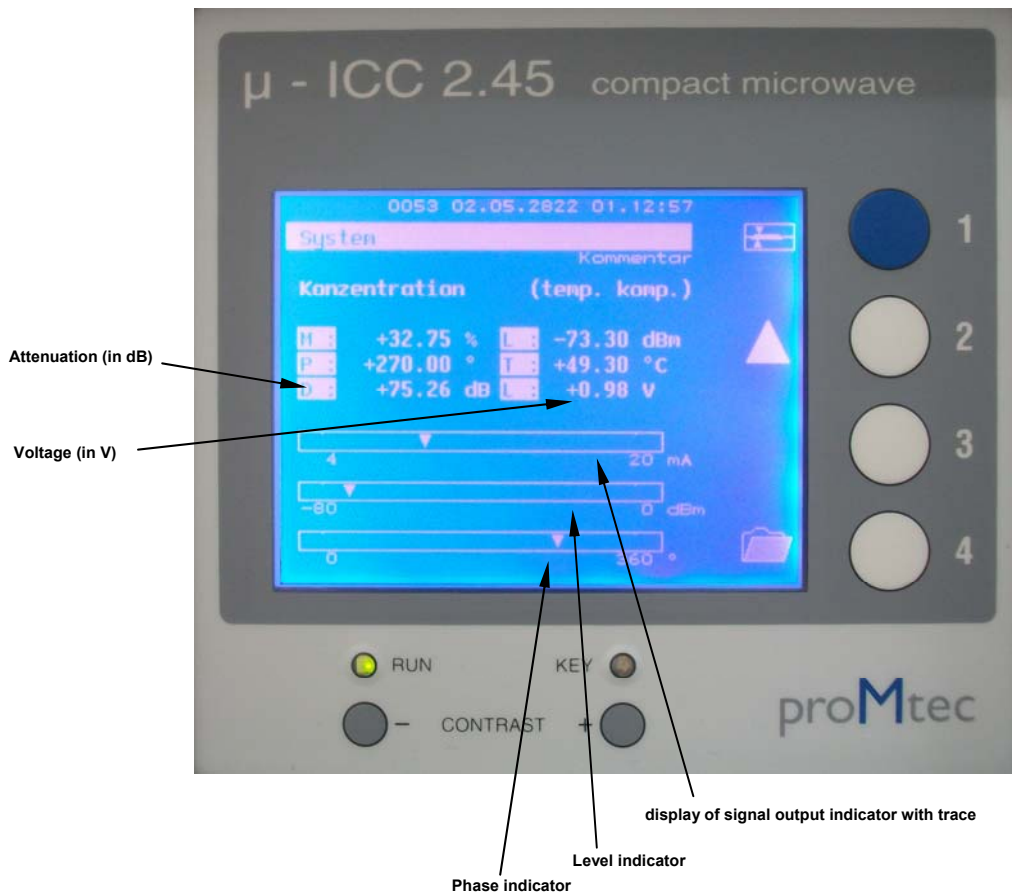


The evaluation unit is controlled via a user-friendly menu. The menu selections can be made by the buttons **F1**, **F2**, **F3** and **F4** which are situated to the right of the LCD screen. These buttons have different functions depending on the current menu.

While the unit is operating the display appears as shown below:

After pressing **F2** the display shows additionally the values for signal attenuation, signal voltage and also three traces for the 4-20 mA signal output, the level and the phase. Press **F2** to return to the original display.





Press **F4** to select the main menu. Press **F4** again to enter the submenu. Press **F1** to return to the previous menu.

The „**System**” main menu after power-up is offers the following submenus:

- Sensor: setting of parameters during configuration and system calibration
- Base configuration: default settings (language, date & time), memory storage options, etc.
- Memory allocation: storage of sensor settings and parameters
- Error status: overview with error number in case of any problems
- Service: reserved for proMtec maintenance personnel

Various submenus are explained more precisely in the following chapters.

3.2 Operation via PC Remote

The device can be operated via PC remote control. This option is integrated in the “ μ -ICC 2.45 Datalog and Update” software.



With the first using of the PC remote control you have to install the setup file. Therefore please follow the included Readme file.

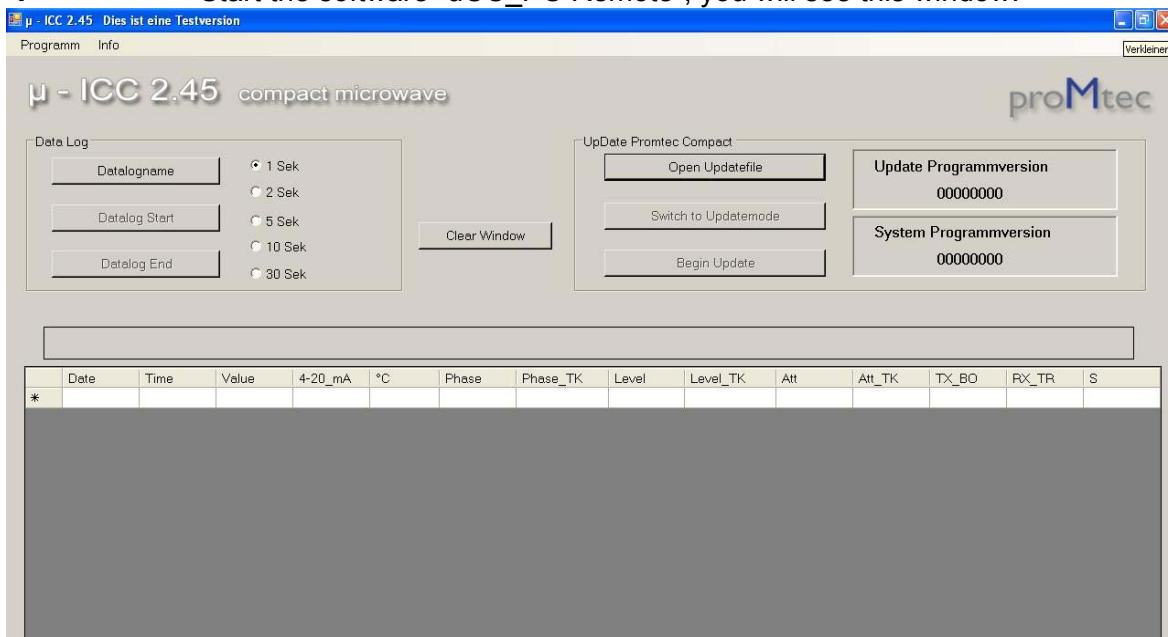
For a successful installation there is also needed **.NET Framework version 3.5**. If there is no current version installed on your PC, the setup file will also install “**dotnetfx35**”, which is also available on the CD.

3.2.1 Connect the PC and Compact unit with USB cable

Before you want to start setting and calibrating of the compact unit without display, you have to connect the PC or Laptop and compact unit with USB cable (see the picture), it is a normal cable for printer.



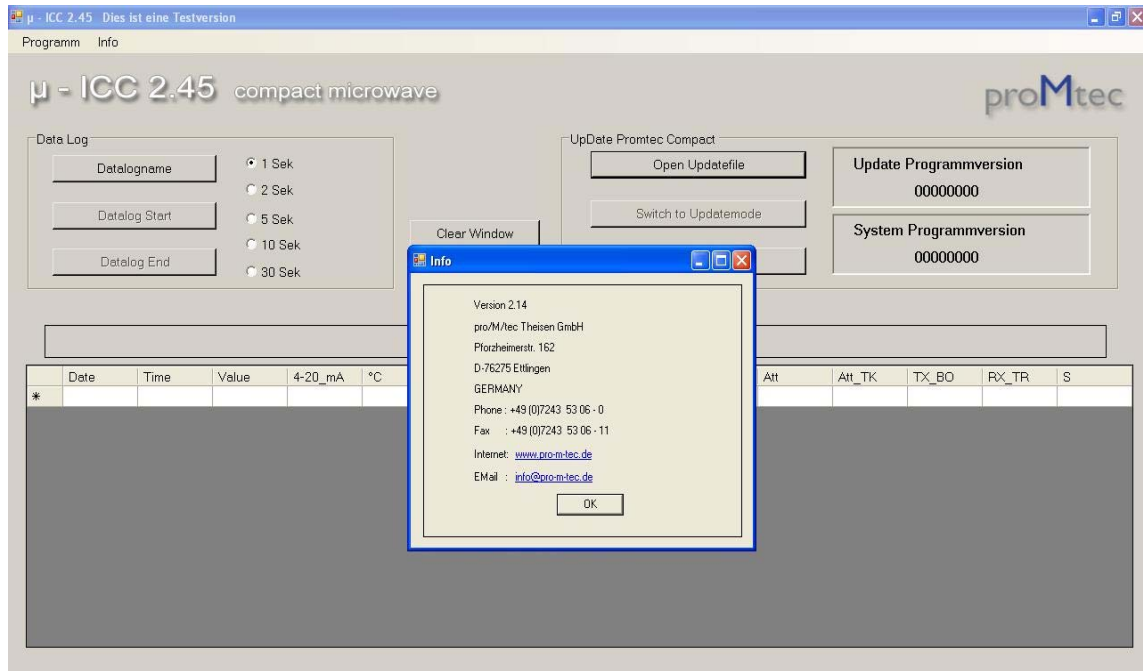
→ Start the software “ μ CC_PC Remote”, you will see this window:



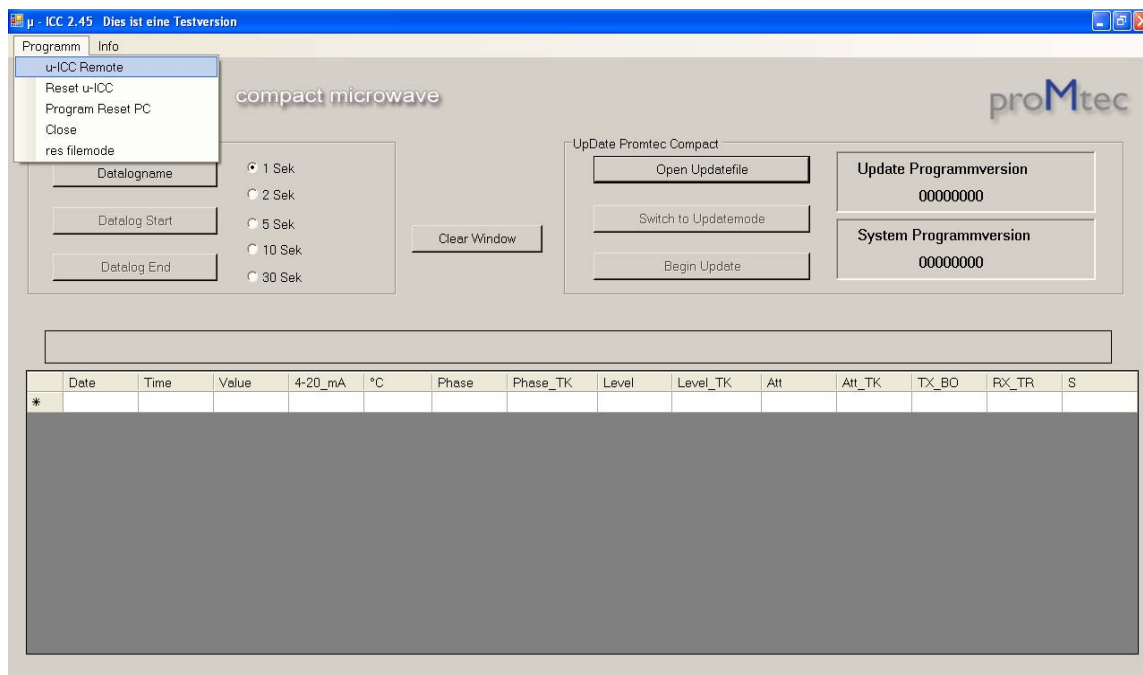
Menu topology and operation handling

If you want to find the Information about the software version, you could click “info”.

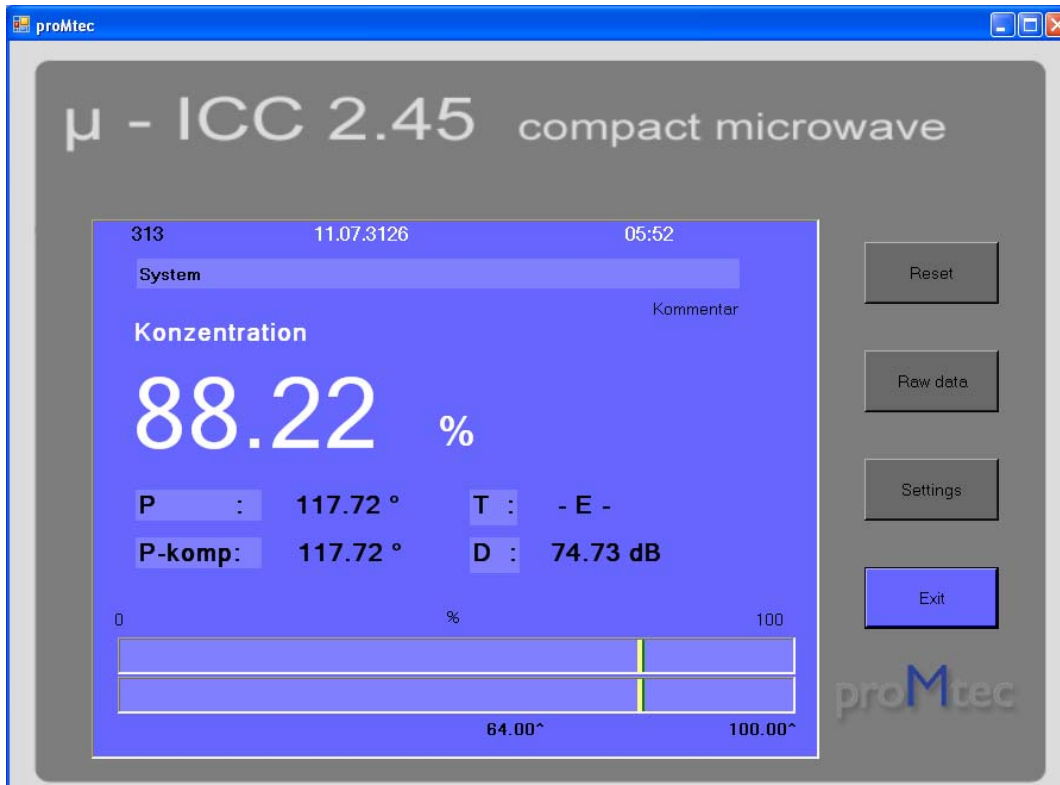
Example: This Version 2.14 of remote is for the version TE10-00.39 of compact unit.



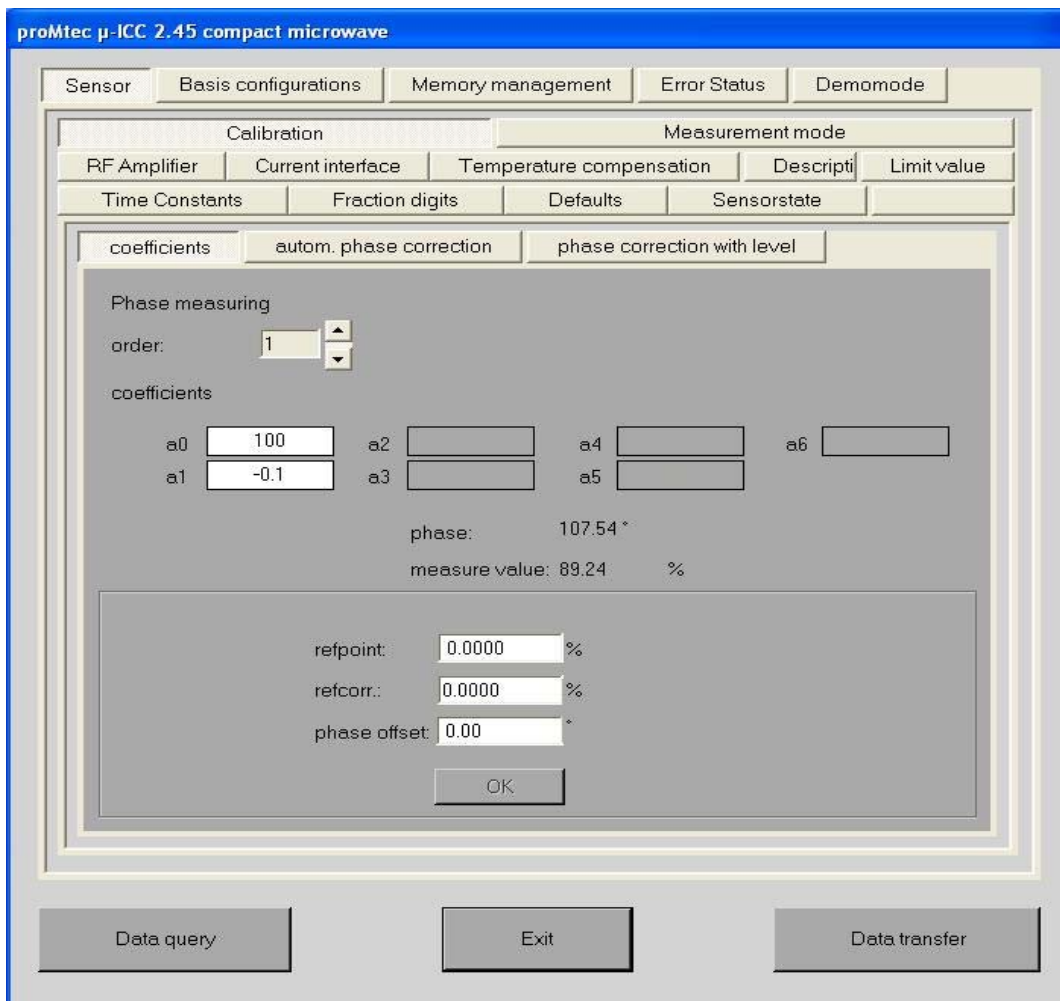
Please choice “u-ICC Remote” (see the picture), now if you haven't connected the compact unit and PC, you will read a warning “no u-ICC connected”. Please connect the unit again.



Menu topology and operation handling



In this window you can click "settings", and come into the setting window.



With this software installed connect the PC with the Evaluation unit and start the software. Now you can set the new values and calibrate.

3.2.2 Setting of the parameters with μ -ICC Program remote

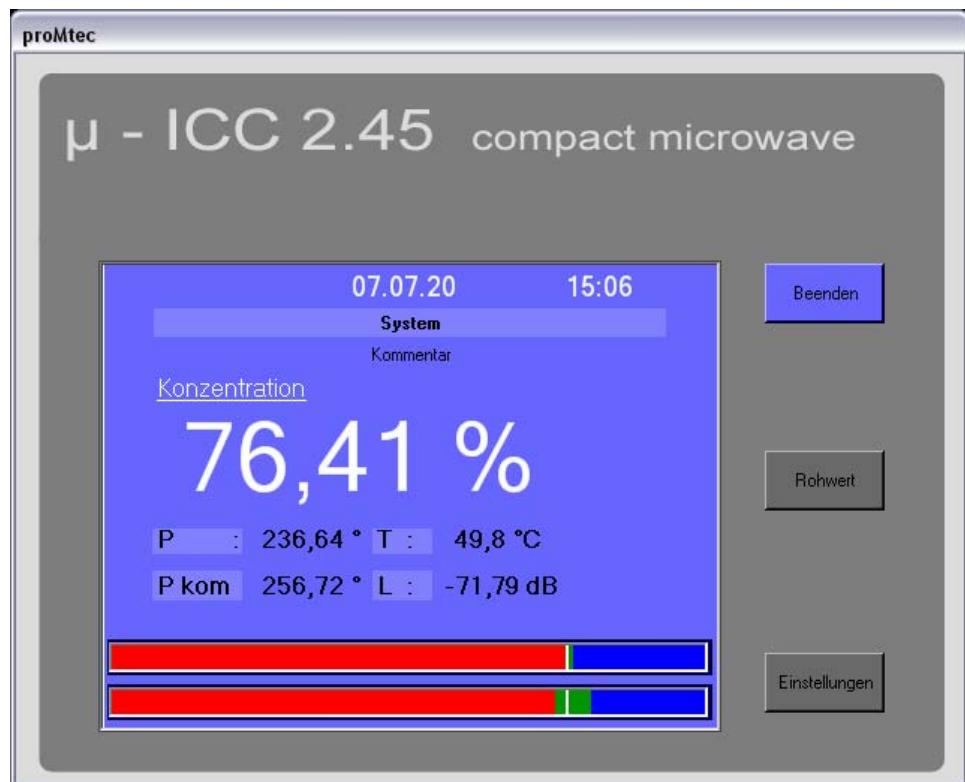
SYSTEM / BASIS CONFIGURATION / USB DEVICE

- Select „**System**”, „**Basis configuration**” and then „**USB device**”. Now select „**USB HID**” and confirm with „**OK**” button.

You can now begin operation of the evaluation unit under PC control.

- Start “ **μ -ICC 2.45 Datalog and Update**”, click on “**Program**” and then choose “**remote control**”.

The window shown below then opens:



The main display appears as shown above and shows the current measurement value, signal phase, process stream temperature, compensated phase and absolute signal amplitude. This display is very similar to the device display.

- To see the other values click on the button “**raw data**”.
- Now click on the button “**settings**”.

A new window appears with the menus and submenus in tab format with a structure similar to the device menu structure.

- To refresh the current settings click on the button “**Data query**”, to transmit the settings to the device click on the button “**Data transfer**”.

Menu topology and operation handling

→ To return to the main screen click on the button “Exit”.

The screenshot displays the 'proMtec μ-ICC 2.45 compact microwave' software interface. The main menu at the top includes 'Sensor', 'Basis configurations', 'RF Amplifier', 'Current interface', 'Temperature compensation', 'Descrip', 'Limit value', 'Constants', and 'Defaults'. The 'Sensor' menu is currently selected, and the 'Phase measuring' sub-menu is active. This sub-menu contains several configuration options: 'order' (set to 1), 'coefficients' (a0: 70, a1: -0,1, a2: 0, a3: 0, a4: 0, a5: 0, a6: 0), 'refpoint' (48,025744 %), 'refcorr.' (0 %), 'phase offset' (0), 'phase' (146,94 °), 'measure value' (55,51 %), and 'phase correction' (0). The 'autom. phase correction' option is set to 'OFF'. At the bottom of the interface, there are three buttons: 'Data query', 'Exit', and 'Data transfer'.

Parameter	Value
order	1
a0	70
a1	-0,1
a2	0
a3	0
a4	0
a5	0
a6	0
refpoint	48,025744 %
refcorr.	0 %
phase offset	0
phase	146,94 °
measure value	55,51 %
phase correction	0
step 360°	0
autom. phase correction	OFF

4 Initial Start Up



Before connecting the evaluation unit with power supply, make sure that the microwave sensors have been connected to the evaluation unit.

During initial start up you should adjust the basic settings; e.g. date and time.

4.1 Language

SYSTEM / BASIS CONFIGURATION / LANGUAGE

First of all you can choose the language from Deutsch, English, Francais, Italiano, Español or Portugues-Standard.

- Please start from „**System**” main menu (by pressing F4). Select „**Basis configuration**” and then select “**Language**”. You can now select your preferred language by "▲" and "▼" and confirm with „**OK**” button.

4.2 Date and Time

SYSTEM / BASIS CONFIGURATION / DATE TIME

Here you can set the date and time.

- Starting from „**System**” main menu, select „**Basis configuration**”, then „**Date /Time**” and „**Time**” can be entered with "▲" and "▶" buttons and confirmed with „**OK**” button. The „**Date**” can be selected and entered in the same way.

4.3 System Reset

SYSTEM / BASIS CONFIGURATION / RESET



After making configuration modifications it might be necessary to make a system reset (e.g. system does not work correctly after new entries).

- Starting from „**System**” main menu, select „**Basis configuration**” and then „**Reset**”. Afterwards confirm by „**YES**” button and finally confirm with „**OK**” button.

4.4 Locking Keyboard

SYSTEM / BASIS CONFIGURATION / PIN-Nr.

Here you can block the keyboard. This avoids any unauthorized change of the sensor configuration parameters. Nevertheless it is still possible to check some of them.



Should you forget the PIN number please get in contact with ProMtec.

4.4.1 Changing PIN number

- Starting from „**System**” main menu, select „ **Basis configuration**” then chose „**PIN-Nr. Keyboard barrier**”. Afterwards change the PIN-Nr.



The initial PIN is “**000000**”. It can be changed anytime by the operator.

4.4.2 Keyboard locking

- Starting from „**System**” main menu, select „**Basis configuration**” afterwards chose „**PIN-Nr. Keyboard barrier**” then „**Block Keyboard input**” and confirm with “**OK**”. You will then have to enter „**Pin-Nr.**” And confirm with „**OK**”. The lock indicator lights red.

4.4.3 Keyboard unlocking

- Starting from „**System**” main menu, select „**Basis configuration**” afterwards selects „**PIN-Nr. Keyboard barrier**” then „**Release Keyboard input**” and confirms it with „**OK**”. You will then have to enter „ **Pin-Nr**” and confirm with „**OK**”. The red lock indicator then turns off.

5 Initial Sensor Configuration

Here you can adjust the initial sensor settings.

5.1 Measurement mode

SYSTEM / SENSOR / MEASUREMENT

At the start, you will first have to choose a measurement mode.

There are three different measuring modes:

- Phase measuring (default setting)
- Level measuring
- Attenuation measuring



Which measuring mode is the most suitable depends entirely on the application. In most cases, especially in the sugar factories, the phase measurement best fits the application.

If you're not getting good results with the chosen measurement mode, please contact us at proMtec.



Starting from „**System**” main menu, select „**Sensor**” then „**Measurement**”. Now select e.g. „**Phase measuring**” and select „**OK**” and confirm it again with „**OK**”.

5.2 Amplification

SYSTEM / SENSOR / RF AMPLIFIER



At the beginning you have to be sure that the microwave signal is strong enough. The attenuation level should be between 25 and 55 dBm respectively 3 and 8 Volts while operating under normal process conditions (the microwave sensors must be covered by flowing process stream).

If the signal is too weak, you can strengthen it in two ways:

- TX-Booster (10/ 20 dB)
- RX-Transponder (20/ 40 dB)

The most suitable microwave signal amplification must be chosen according to the particular application. Usually we recommend trying first with the Booster, and then with the Transponder. In special cases, it is also possible to combine these two amplification methods.



Starting from „**System**” main menu, select „**Sensor**” then „**RF Amplifier**”. Now select e.g. „**TX-Booster**” and switch from „**OFF**” to „**+10 dB**” or „**+20 dB**” depending on the amplification level needed.

5.3 Measurement

The following settings are necessary for accurate measurements.

5.3.1 Temperature compensation

SYSTEM / SENSOR / TEMP.COMPENSATION



The microwave signal is influenced by temperature changes of the medium. As a result, the phase shift has to be temperature compensated. Therefore you have to define both the temperature reference **Tref** and the temperature coefficient **Tk**.

For the reference temperature you should usually take an average temperature over the whole process.

The temperature coefficient should be set as **Tk= -1.5000e+00** initially. This value can then be adjusted as required.

In the sugar industry:

For the batch pans **Tref** should be set to the seeding point temperature.

The temperature coefficient for sugar products (juice, syrup, masse cuite...) we recommend setting **Tk = +3,0000e+00**.

→ Starting from „**System**” main menu, select „**Sensor**” then „**Temperature compensation**”. Select „**Temp. corr**” and switch from „**OFF**” to „**ON**” in order to activate temperature compensation, confirm with „**OK**” button. Now select „**reference temp**” and enter the desired temperature and confirm with the „**OK**” button.

Finally enter **Tk** as above.

5.3.2 Start coefficients

SYSTEM / SENSOR / CALIBRATION / COEFFICIENTS



The measurement system needs to be calibrated using the laboratory results. To do this, the start coefficients must be set.

The coefficients **A₀** and **A₁** are the Offset and the slope of the following formula:

$$Y = A_1 X + A_0$$

X- Compensated Phase shift

Y- Measurement in the chosen physical units.

A₀ and **A₁** define the measurement range. It can be calculated as follows:

Upper end of the measurement range = **A0**

Lower end of the measurement range = **(A1*360) +A0**

We usually take the maximum measurable value (with certain reservations) as **A0**. **A1** is the microwave's absorption coefficient and depends on the distance between the sensor probes and the process stream between them.

The measurement range appears on the display below the bar graph (drag pointer).

Example:

For a batch pan application with a distance between sensor probes of 45mm, we usually have start coefficients of **A0=100** and **A1=-0.1**. They result in a measurement range of 64-100 Brix.

For a continuous pan application with a distance between sensor probes of 60mm the start coefficients are usually: **A0=100** and **A1=-0.075**. These result in a measurement range of 73-100Bx.



If the measurement range is too small and there is a risk of exceeding this range the phase correction with signal attenuation level should be employed (please read the section 5.3.4 phase correction with signal attenuation level).



Starting from „**System**” main menu please select „**Sensor**”, „**Calibration**” and finally „**Coefficients**”. Afterwards enter the coefficients A_0 and A_1 corresponding to the application.

5.3.3 Reference Point

SYSTEM / SENSOR / CALIBRATION



At the beginning of every start up it is necessary to position the scale of the measurement with a reference phase value. A sample must be taken and analysed and the resulting value entered in the evaluation unit as quickly as possible. For this operation there is no need to be accurate; a hand refractometer reading is sufficient. The process must, however, be under steady state conditions.

For batch pans we usually take samples after the pan has been filled and just before seeding.

For other applications we take samples under normal process conditions.

There is no need to change the phase offset manually. It's automatically adjusted by the system upon setting the reference point. In turn, the reference point changes automatically every time we change A_0 .



In general, the reference correction („**refcorr**”) should not be changed (always be set to 0).



Starting from „**System**” main menu please select „**Sensor**”, Then „**Calibration**” followed by „**ref-point**”, then select „**YES**” and confirm with „**OK**” button, finally enter the value.

The displayed measurement is now equal to the reference point.

5.4 Other Settings

5.4.1 Sensor Description

SYSTEM / SENSOR / DESCRIPTION

You should set a description of the measurement for each application.

- Select „**Description**” and confirm with „**OK**” button. Selecting then „**Product name**”, „**Comment**”, „**Phys. Measurement item**” and „**Phys. unit**” enable you to display information concerning the application that is stored in the unit’s memory.

Example: Physical Unit

SYSTEM / SENSOR / DESCRIPTION / PHYS.UNIT

- Select „**Phys. unit**” and confirm with „**OK**” button. Select desired unit (**Bx**, **%**, **g/l**, **g/cm³**...) using "**▲**" and "**▼**" buttons and confirm with „**OK**” button.

5.4.2 Current Interface

SYSTEM / SENSOR / CURRENT INTERFACE

You can scale the 4-20 mA current output to the corresponding measurement range as follows:

- Select „**Current interface**” and confirm with „**OK**” button. Then select „**current output**”, choose the desired output signal (0-20 mA or 4-20 mA), and confirm with „**OK**” button.

Example:

Enter the output values for the desired scale (e.g. 70 as 4mA and 100 as 20mA). These inputs result in a measurement range of 70 to 100 (Brix). The evaluation unit displays this range above the bar graph (drag pointer).

There is a test function for the current output. It can be activated by switching „**Test current**” from „**OFF**” to „**ON**” and by confirming with „**OK**” button. In this fashion the output can be controlled from the control room.

The test current value can be given directly in **mA** (e.g. Test current: 12 mA)

- The „**Calibration**” function of the „**Current interface**” menu allows regulation of 4 mA and 20 mA by using the **F2** (+) and **F3** (-) buttons. To start regulation, a mA ammeter must be connected to the current output connector pins.

6 Data logging

Two data logging options are available. By connecting a PC data can be recorded and stored directly on the hard disk drive. Alternatively the data can be stored on the evaluation unit's internal SD card.



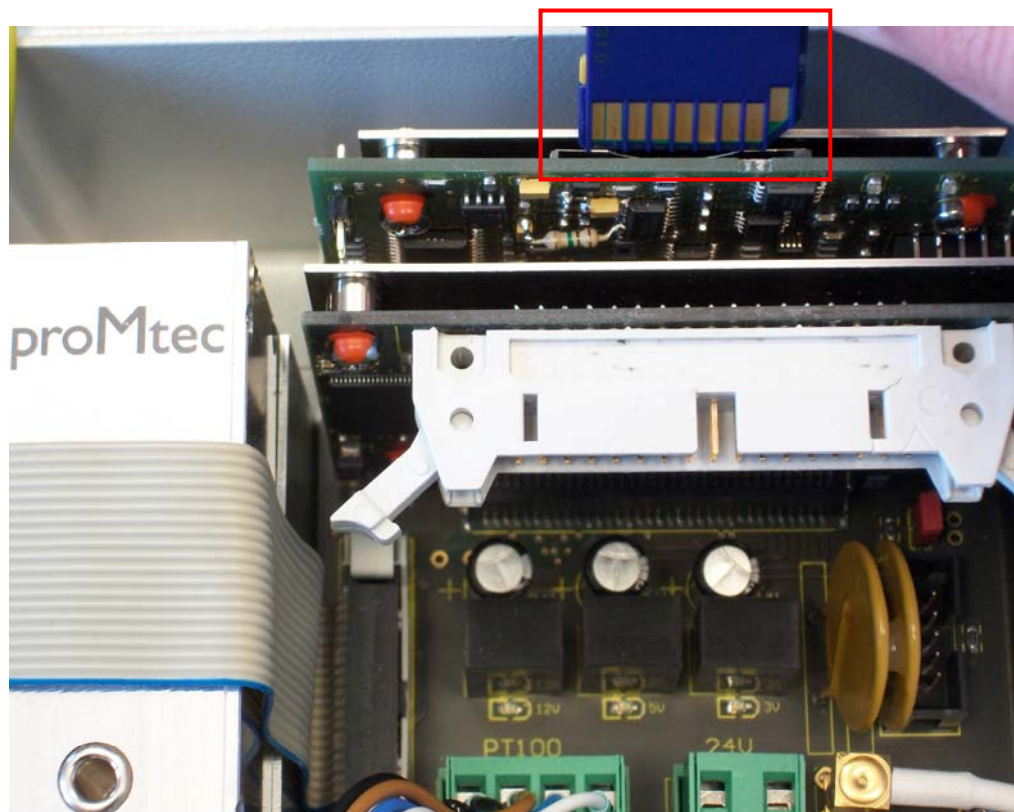
Before connecting a PC or Starting to log on the SD card you must first choose one of the above and confirm it.

6.1 SD Card



In the basic system by default there is SD card already inserted.

To change the SD card you have to open the cover.



Remember to disconnect the power supply before removing the cover.



You can run with continuous data logging. In this case, when the SD card memory is full the memory's first data positions will be overwritten.

SYSTEM / BASIS CONFIGURATION / SD CARD

→ Select „**System**”, „**Basis configuration**” and „**SD Card**”, then „**Data log**” and switch it from „**OFF**” to „**ON**” and confirm with „**OK**” button.

Also included in this menu item there is the possibility to adjust the frequency of the data storage.

→ To do this choose „**Log time**” and enter the data storage interval desired. By default there is a value of 10 seconds.



To read the data there is no need to remove the SD card. It can be simply accessed and read from the USB interface.

In this case the compact device has to act as a memory device. To activate this mode you must choose USB memory device.

SYSTEM / BASIS CONFIGURATION / USB DEVICE

→ Select „**System**”, „**Basis configuration**” and „**USB device**”. Now select „**USB Memory Device**” and confirm with „**OK**” button.

You can now access the SD card as a removable disk.

6.2 USB HID

With the Human Interface Device (HID) you can log data as well as operate the unit via PC (already described in chapter 3.2).



Additionally there is the option to update the system software. In general this is only done by proMtec staff. For more details please contact us at proMtec.



For assistance in installing and operating the software read chapter “**3.2 Operation via PC Remote**”.

Before Starting the “**μ-ICC 2.45 data log and update**” software should be sure to choose the USB HID mode.

SYSTEM / BASIS CONFIGURATION / USB DEVICE



Select „**System**”, „**Basis configuration**” and „**USB device**”. Now select „**USB HID**” and confirm with „**OK**” button.

Now you have to choose a datalog name for data storage in an excel file. After that you can start data logging.

7 System Calibration



Before calibration it is important to determine the initial sensor configuration (please see chapter 5).

7.1 Sampling



For calibration it is necessary to take samples over the whole process and have them analyzed evaluate in the laboratory. While sampling the process must be under steady state conditions. A minimum of 5 to 8 samples must be taken, which cover the complete measurement range.

Example for sugar industry:

For batch pans it is recommended to take 3 samples before the seeding point and at least 5 following it.



For each sample note following data:

- Date and time of sample taking
- Displayed current measurement value (in corresponding units)
- Phase shift (P in °)
- Temperature (T in °C)
- Compensated phase shift (P-comp in °)
- Signal Attenuation Level (L in dBm)
- Attenuation (in dB)
- Volts (in V)



You can either note these values manually or simply switch on data log to record them on the integrated SD card. Additionally, a sample push-button can be used to mark the logged data at the time the sample is taken.

7.2 Initial Calibration



After sampling, enter these current measurement values into the excel file “**IBN**” in the column provided and add the corresponding laboratory values to the column “**labor (Y-Axis)**”.



With these values the new settings will be calculated. Samples which are not used for the calibration should be placed in the field „**Labor not used**“. The remaining columns are only for the calculation and may not have to be changed. They only have to be copied into the rows below.

In addition you have to enter the initial settings such as **A0**, **A1**, ref-point and p-offset (previously entered initial settings).



The new settings (**A0**, **A1**) are automatically calculated and can be read from the sheet “**calibration data**” and also from the sheet “trend” (**form: $Y = a1 * x + a0$ and the correlation coefficient R^2**).

The correlation coefficient R^2 should be nearly 1 proving that the sampling was representative and that the new coefficients can be entered in the evaluation unit. In the sheet „trend“, you can compare the various settings graphically.

newsettings:		A 0 =	#DIV/0!	A 1 =	#DIV/0!	Measuring range	#DIV/0!	#DIV/0!	T-ref =	TK1 =	#DIV/0!				
Sample	date	time	instrument Bx pMt	phase p (°)	temperature T (°C)	phase comp p-comp (°)	Level (dBm) raw	Level-Tk (-dBm)	Att (dB)	labor. (y axle)	labor. no used	p-comp (°) (x axle)	p-comp no used	instrument pMt calibrated	Δ (lab-instr)
this line contents the copy fields I9 and K9. Later please delete the not used fields.												0,00	0,00	#WERT!	#WERT!
1												0,00	0,00	#DIV/0!	#DIV/0!
2												0,00	0,00	#DIV/0!	#DIV/0!
3												0,00	0,00	#DIV/0!	#DIV/0!
4												0,00	0,00	#DIV/0!	#DIV/0!

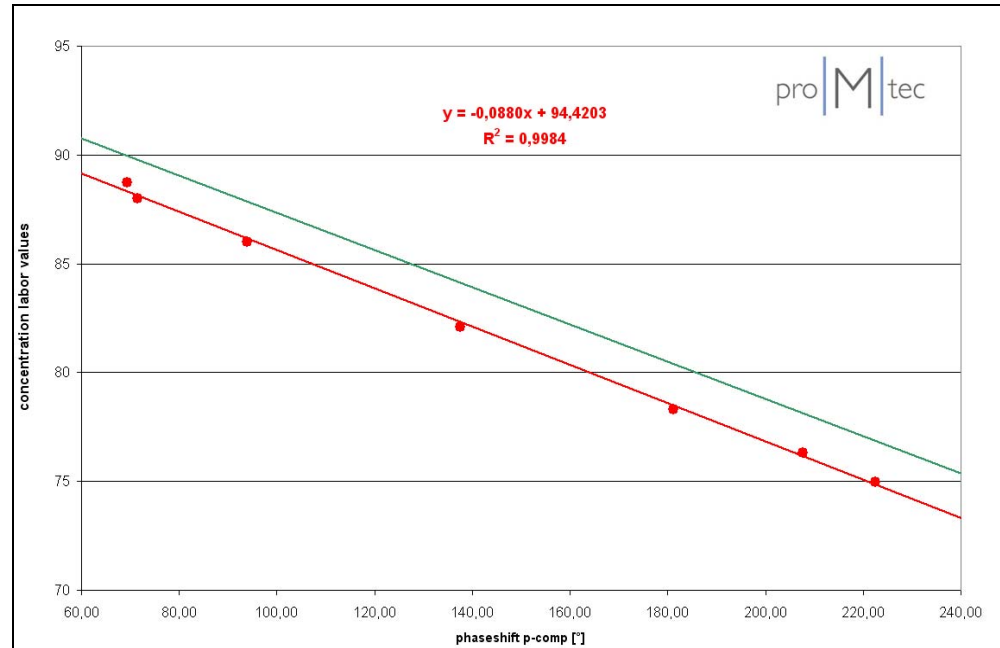
installation
microwave concentration measurement μ-ICC 2.45

calibration

Microsoft Excel - IBN-Lab-Phase-dbm-ICC-comp-2011April-EN.xls

customer:	proMtec										dBm-section:								
product:											B0 dBm =	B1 dBm =							
settings before calibration	A0 =	A1 =	ref-point =	?	ref-cor =	0,0000	p-offset =					B0 dBm =	B1 dBm =						
Anzeige= A0-Phase^A1	Max	0,00	0,00	Min	360	0													
newsettings:	A 0 =	44,9681	A 1 =	0,0615	Measuring range	44,97	67,10	T-ref =	70	TK1 =	3,00	Measuring range	0,99	T-ref_dBm =	70	T-K1_dBm =	-100		
this line contents the copy fields I9 and K9. Later please delete the not used fields.																			
Sample	date	time	instrument Bx pMt	phase p (°)	temperature T (°C)	phase comp p-comp (°)	Level (dBm) raw	Level-Tk (-dBm)	Att (dB)	labor. (y axle)	labor. no used	p-comp (°) (x axle)	p-comp no used	instrument pMt calibrated	Δ (lab-instr)	dBm-komp (°) (x axle)	labor. (y axle)	dBm-komp no used	labor. No used
1	1.Mrz 11	14:55		200,06	87,19		-54,10		36,95	61,40		0,00	0,00	#WERT!	#WERT!	0,00			
2		15:05		206,95	87,50		-54,10		37,86	56,80		148,49	148,49	54,10	-54,10	-36,91			61,40
3		15:14		213,39	88,25		-53,93		38,33	52,80		154,45	154,45	54,46	-54,46	-36,68			52,80
4		15:26		222,89	88,47		-53,35		38,55	47,70		158,64	158,64	54,72	-54,72	-35,68			
5		15:33		230,83	87,66		-52,94		38,58	44,70		167,49	167,49	55,26	-55,26	-34,88			47,70
6		13:19		171,80	63,34		-55,32		33,54	67,80		177,85	177,85	55,90	-55,90	-35,26			44,70
7												191,78	191,78	56,76	-56,76	-61,98			67,80

→ The new settings can now be transferred to the evaluation unit. Therefore you have to put in the coefficients A0 and A1. Tk might also have to be readjusted.



7.3 Phase correction with level



As already mentioned, you might have to use the phase correction, if the measurement range seems to be too narrow.

For this purpose you can also obtain the coefficients B0, B1 from the excel file. Simply enter these additional values as well as another temperature compensation for the signal amplitude level measurement.

For the reference temperature you should use the same value as before (average temperature over the whole process).

For the temperature coefficient you can also use the same value before (in section 5.3.1 Temperature compensation), but you might have to readjust it.



Starting from „**System**” main menu, select „**Sensor**”, then „**Calibration**”, then „**Phase correction with level**” then switch from „**OFF**” to „**ON**” in order to activate temperature compensation, finally confirm with „**OK**” button.

Then select „**coefficients**” and enter the values for B0 and B1. These values can be obtained from the excel file (as well as A0 and A1).

(No used!) If the temp-compensation is not used, please set the Tk1 = 0. Now select „**temperature compensation**”, then „**reference temp**” and enter the desired temperature. Finally confirm with „**OK**” button.

Then finish by entering **Tk** as described above.

8 Sensor Settings: save and reload

Here you can save and load your settings, and reload the factory settings. This can be done in the "Sensor" section or in the "Memory allocation" section.

8.1 Sensor: Save settings, Load settings, Factory settings

SYSTEM / SENSOR / STANDARD SETTINGS

8.1.1 Saving the configuration

- Starting from „**System**” main menu select „**Sensor**”, then select „**Standard settings**” and „**Save settings**”.

You can now choose one of 30 memory locations.

- Select the desired location. If the location is not occupied, the device displays: „**empty memory cell**”. Select „**save data set**” and confirm with „**OK**” button.

8.1.2 Loading the saved configuration

- Starting from „**System**” main menu, select „**Sensor**”, then „**standard settings**” followed by „**load settings**”. Select a location (from 1 to 30). If the location is free, the device displays: „**empty memory cell**”. Then select „**load data set**” and confirm with „**OK**” button.

8.1.3 Reloading factory settings

- Starting from „**System**” main menu please select „**Sensor**”. Then choose „**standard settings**”. Afterwards select „**load factory settings**”. Confirm by „**YES**” button and finally confirm with „**OK**” button.

8.2 Memory allocation: Load and Delete Internal and External Memory

SYSTEM / MEMORY ALLOCATION

8.2.1 Copying of configuration

SYSTEM / MEMORY ALLOCATION / COPY DATA SET

- Starting from „**System**” main menu select „**Memory allocation**” then „**copy data set**”. Then choose the source configuration to be copied (locations 1 to 30).

Then choose the desired available memory location. Finally select „**start to copy**” and then confirm with „**OK**” button.

8.2.2 Deleting of configuration

SYSTEM / MEMORY ALLOCATION / DELETE DATA SET

- Select the configuration to be deleted (location 1 to 30). Select „YES” button and finally confirm with „OK” button.

8.2.3 Deleting of all memory

SYSTEM / MEMORY ALLOCATION / DELETE COMPLETE MEMORY



You can delete simultaneously all additional memory (locations 1 to 30).

This is will not delete the sensor settings.

- Select „**delete complete memory**”, then „**delete internal memory**”. Afterwards it must be confirmed with „OK” to button. Confirm by „YES” button and press "OK" again.

9 Moving of the measurement range

SYSTEM / SENSOR / CALIBRATION

Sometimes the chosen measurement range is unsuitable for the measurement. There is a simple way to make it suitable.

Example:

There is a range from 65 to 90 %, but it is needed an upper limit of 95 %. Now you have the possibility to change it by phase offset.

Therefore you need to calculate the required phase shift for the missing 5%.

Total measurement range = 90 % – 65 % = 25 %.

Phase shift per 1 % = $360^\circ / 25 \% = 14.4^\circ$ per 1%

*Offset = 14.4° per 1% * 5 % = 72.35°*

Here you get an offset of 72.35° . Add this value to the already existing phase offset.

→ Starting from „**System**” main menu, select „**Sensor**”, then „**Calibration**” and finally „**phase offset**” and add the above calculated offset to the phase offset.

This example extends the range upwards. In the same manner you can move it downwards. To extend the range to a lower minimum, subtract (instead of adding) the calculated offset from the existing phase offset.

If you want to use this function, please keep touch with proMtec technical, we must be sure that it is not wrong setting.

10 Troubleshooting

10.1 PIN is not working

You can block the keyboard with PIN. Ensure that only qualified personnel know this PIN. If you don't remember the PIN, please contact your supervisor. If it should be necessary proMtec can override your PIN.

10.2 Constant offset

SYSTEM / SENSOR / CALIBRATION / COEFFICIENT



Maybe you will find a constant offset.

After saving the settings (see above), you can change the settings without any troubles.



To correct the offset, the best way is just to add the difference to **a0**.

This should not be given to the operator as a legal action, being that the BRIX-meter must be calibrated in the laboratory value and the seed point value is linked to temperature and purity. The seed point value should be set in the DCS system.

If you take more samples at a later date you can enter them into the actual spreadsheet and compare them with the old samples.



This is possible, if you haven't yet

- Given a new ref-point,
- Changed the ref-correction or
- Calibrated the Pt-100.


11 Technical specifications

Housing	Aluminium wall housing, protection IP65, Dimension 160 x 160 x 120 mm, 3,1 kg
Mounting	4 mounting tabs H x B = 120 x 180 mm for \varnothing 6 mm
Power supply	24 V DC, max. 1000 mA
Display	3.9"-Monochrome QVGA-LC, 320 x 240 pixel, illuminated. Large display of the current measurement and drag pointer with analogue bar graph displays of measurement evolutions in the defined scale
Microwave	Extremely stabile phase, attenuation and level measurement with PLL-synthesizer, 2.45GHz, transmission power 10 mW, 10 dBm
Microwave cable	2 x N-plugs for heavily shielded coaxial cable 50 ohms, 1.5 m; 0.5 kg
Insertion sensor	DN65 flange, tube length 100 mm, Type A sensor, Pt100 integrated, 3.1 kg; DN80 flange, tube length 100 mm, Type A sensor, Pt100 integrated, 5.4 kg
User interface	Soft touch keyboard with 4 keys, well-structured multilingual menus
Status display	LEDs for measurement status and access-PIN for parameters
Output	4 – 20 mA isolated output for concentration and temperature, max. loop resistance 500 ohms
Data interface	USB 2.0 interface for software update, data output and calibration via PC
Data memory	SD-/ SD-HC-Card Slot for writing/ reading measuring data & storage of parameter settings
Environment temperature Evaluation unit	0 to + 50 °C
Environment temperature microwave cable	- 40 to + 90 °C
Temperature compensation	Pt-100 with four-wire-system, M12 plug-in
Sample push-button	for memorizing measured data, M12 plug-in

12 Spare parts

Item	Order number
Evaluation unit μ -ICC 2.45 Compact	ICC CO LCD
3.9"-display 320 x 240 pixel with foil keyboard, ready to connect in housing cover 160 x 160 x 50 mm, connection cable	A01-PG10-DIS
Aluminium housing 160 x 160 x 70 mm, open without cover, all internal cables, connectors and outside cable screw fittings	A01-PG10-BOX
Microwave module μ -ICC compact, 2x N-plugs, 120 x 70 x 40 mm, level meter indication on board, connection cable	A01-PG10-HFM
Motherboard with DC-, Pt100-, Sample key- and 4 to 20 mA connectors	A01-PG10-MBO
CPU-board	A01-PG10-CPU
Interface-board with SD-/SD-HC-card slot	A01-PG10-INT
Microwave cable	CA MW 1.5
Pt-100 (temperature sensor)	TS PT 2.5 S J
Insertion sensor mounted on DN65 flange	IS 065/06-100/045A
Insertion sensor mounted on DN80 flange	IS 080/10-100/045A
Insertion sensor probe	IS A

13 Declaration of Conformity



proMtecThesen GmbH | Telefon: (0)7141 567-123 | www.proMtec.de

proMtec
Highly concentrated know-how

proMtecThesen GmbH
Friedrichshafenstraße 62
70275 Stuttgart (Germany)
Phone: +49 (0) 71 41 567 123
Fax: +49 (0) 71 41 567 111
E-Mail: info@proMtec.de
www.proMtec.de

CE Conformity Microwave Density Measurement μ -ICC 2.45 compact

This instrument has been tested and found to comply with the limits of the European Council Directive on the approximation of the laws of the member states relating to electromagnetic compatibility (89/336/EEC) and in accordance with 73/23/EEG.

This instrument complies with the requirements of

- IEC 1010-1 Safety Requirements for Electrical Equipment for Measurement, Control and Laboratory Use
- EN 55011 Teil B
- EN 50082/1
- EN 50082-2, part 2: industrial area
- EN 50081-2, part 1: industrial area

All appropriate EG-principles:

Electromagnetic compatibility: 89/336/EEC
Changed: 91/263/EEG, 92/31/EEG, 93/68/EEG, 93/87/EEG

Low potential voltage: 73/23/EEG, Changed: 93/68/EEG

This complies with the requirements of:

- EN 55011:1998+A1:1999 + A2:2002
- EN 61010-1: 2002 - 08
- EN 61006-6-2:2001
- EN 61000-4-2:1995+A1:1998+A2: 2001
- EN 61000-4-3:2002+A1: 2002
- EN 61000-4-4:1995+A1:2001+A2: 2001
- EN 61000-4-5:1995+A1: 2001
- EN 61000-4-6:1995+A1: 2001
- EN 61000-4-11:1994+A1:2001

We confirm that our manufacturing and development for the instrument μ -ICC 2.45 is in accordance with the laws mentioned above.

Ettlingen, 15. 10. 2009




Karl-Heinz Thelsen
 Managing Director

GRUNDELING GMBH
Rudolf-Müller-Str. 10a-18B 70563
Stuttgart-Feuerbach
Stuttgart, Germany

Deutschland
70563 Stuttgart
Rudolf-Müller-Str. 10a-18B
Stuttgart-Feuerbach
Stuttgart, Germany

proMtecThesen GmbH
Friedrichshafenstraße 62
70275 Stuttgart
Stuttgart, Germany

Deutschland
70275 Stuttgart
Friedrichshafenstraße 62
Stuttgart, Germany

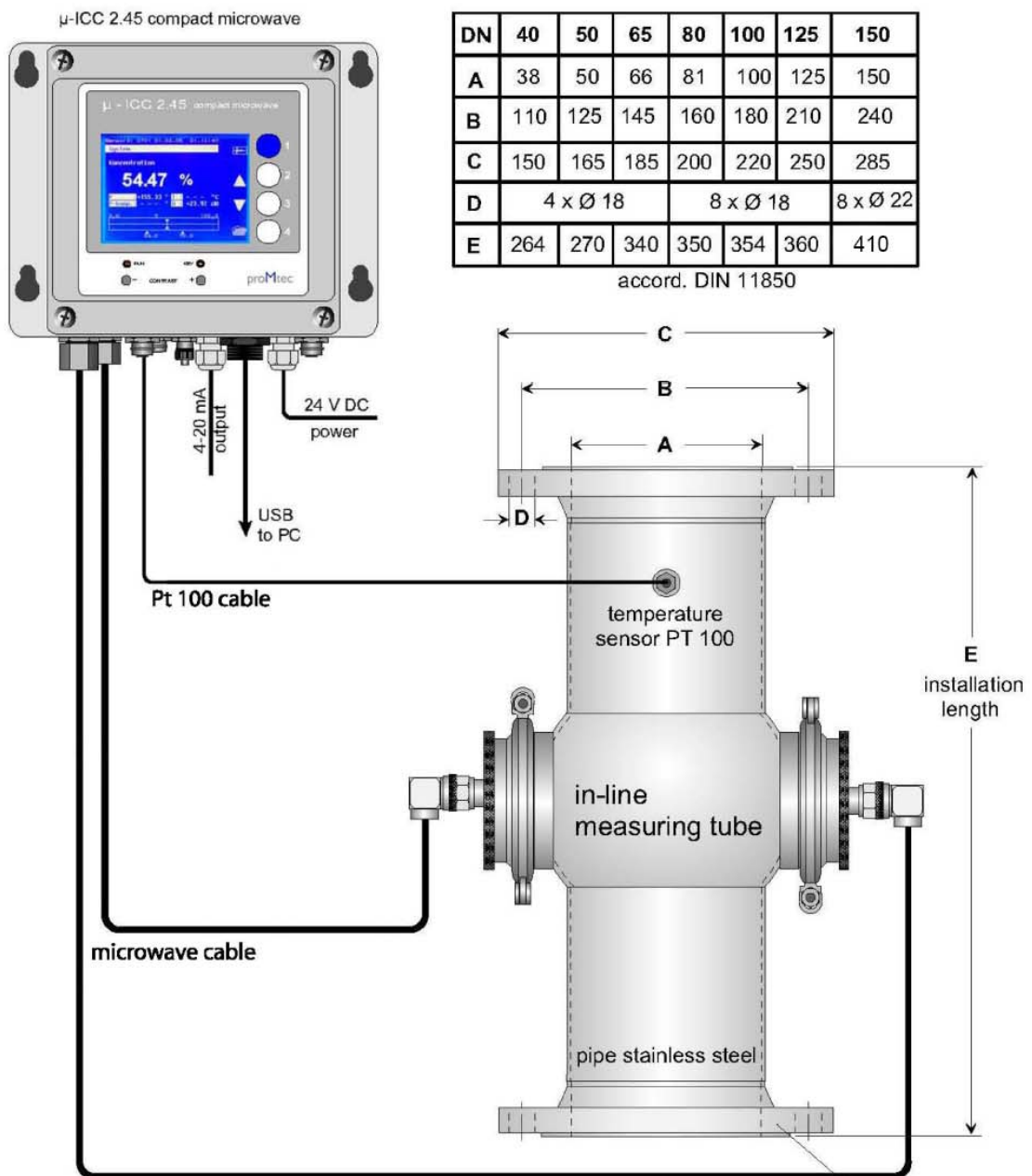
USA
11000 11th Street
Baltimore, MD 21286
Baltimore, Maryland



14 Dimensional drawings

14.1 Flat sensors with Inline-Gage DN 40 to 150

Density-/ Concentration Measurement μ -ICC 2.45 compact with Inline-Gage DN 40 to 150 (2" to 6"), PN 10 [with installation flange]



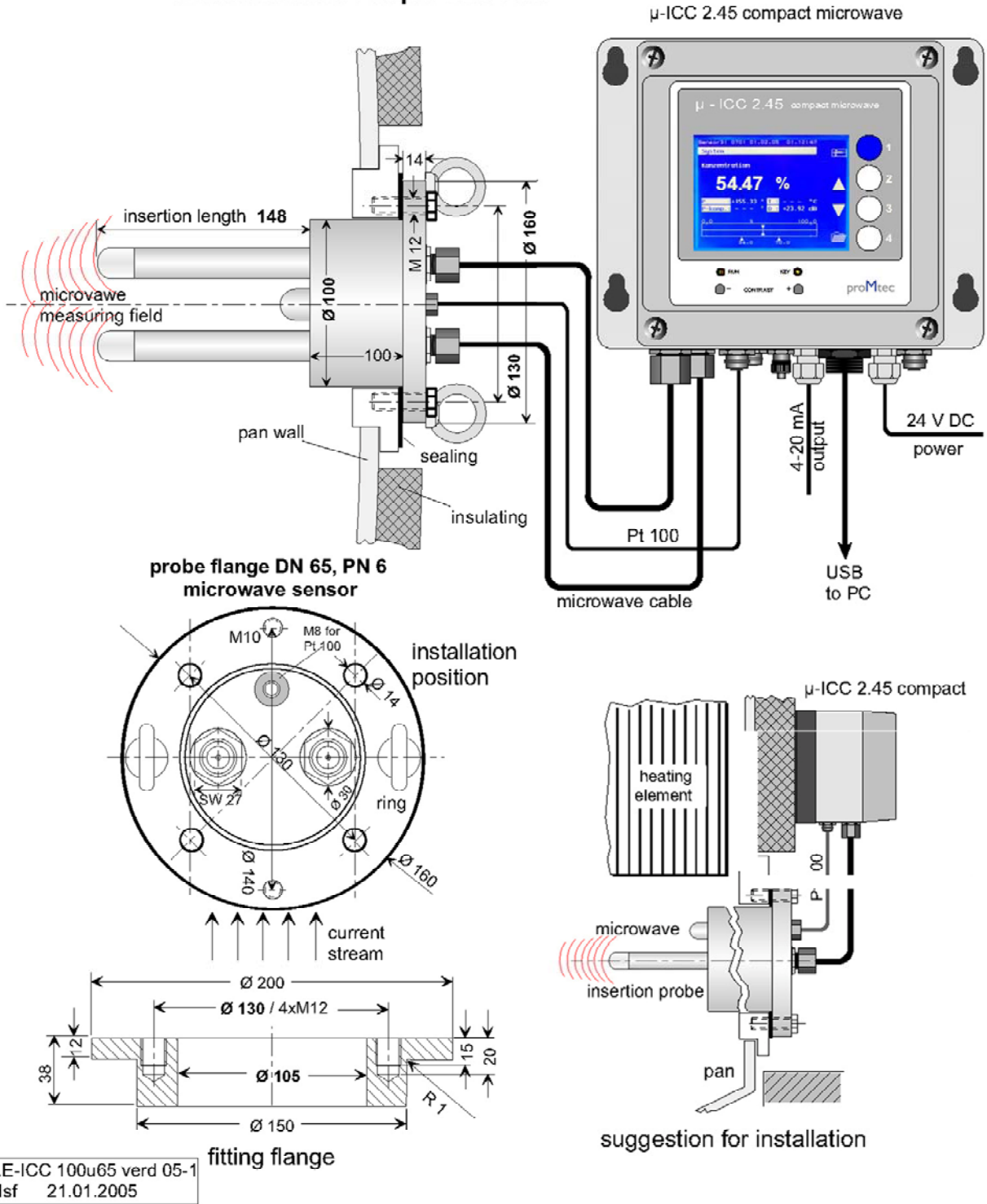
z.E-Compact Inline
40-150.dsf 09.12.2009
update 25.05.2014 pg

recommended
installation position:
vertical go up pipeline

installation flange
accord. DIN 2633

14.2 Insertion sensor DN65

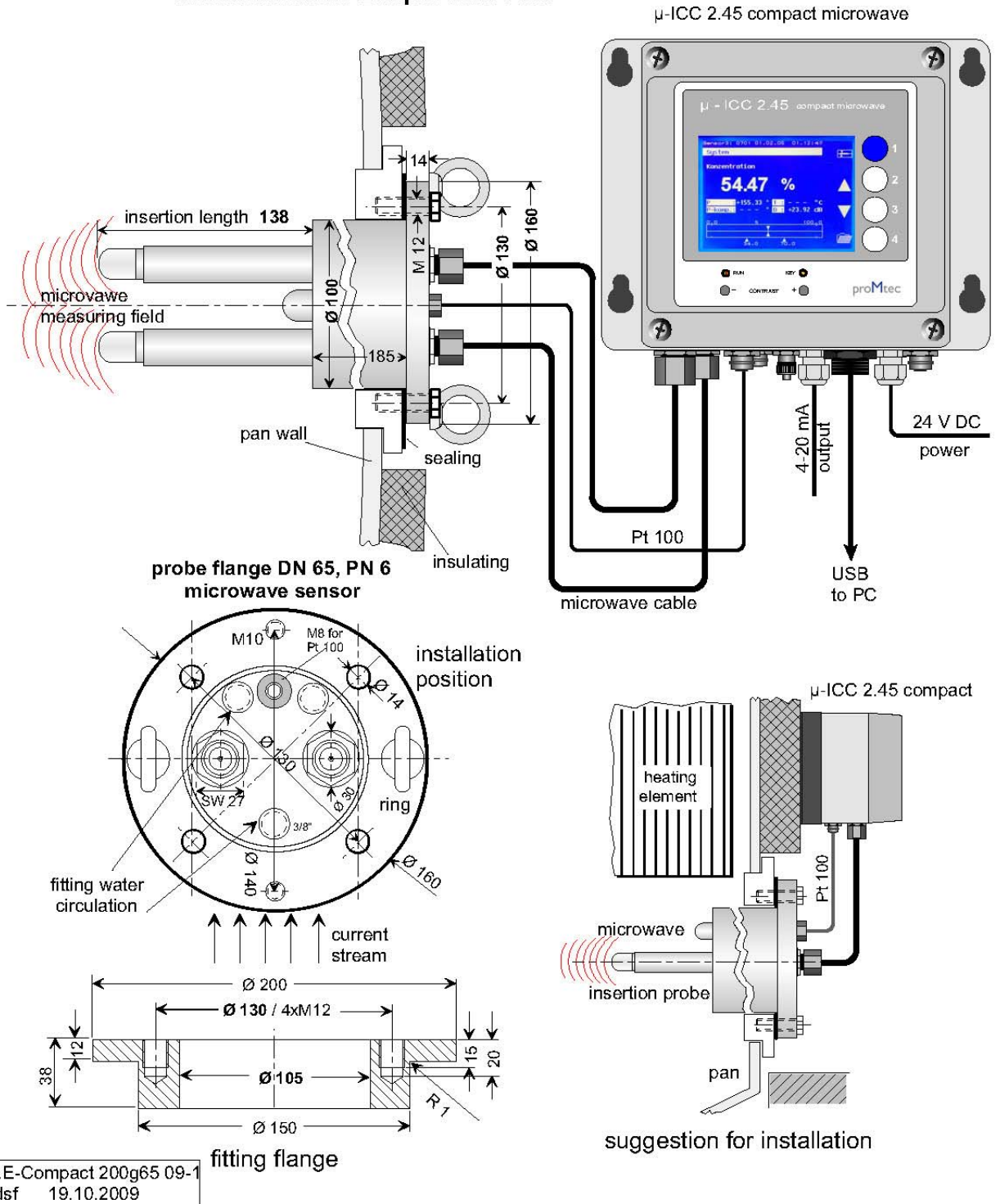
Microwave Insertion Sensor
- Installation In Evaporator Pan -



z.E-ICC 100u65 verd 05-1
.dsf 21.01.2005

14.3 Rinsed insertion sensor DN65

Microwave Insertion Sensor (With Water Circulation)
 - Installation In Evaporator Pan -



14.4 Insertion sensor DN80

Microwave Insertion Sensor
- Installation In Evaporator Pan -

