

## MICROWAVE CONCENTRATION MEASUREMENT

### **μ-ICC 2.45 AIO device**



## **- MANUAL -**

<b>1</b>	<b>Safety instructions</b>	<b>3</b>
1.1	Symbols and indications	3
1.2	Normal usage	3
1.3	General safety & user warnings	3
1.3.1	Environmental conditions	4
1.3.2	Electrical	4
<b>2</b>	<b>System description <math>\mu</math>-ICC 2.45 AIO device</b>	<b>5</b>
2.1	Measurement principle	5
2.2	Components	7
2.3	Installation	8
2.3.1	Connections and dimensions of the evaluation unit	8
2.4	Installation recommendations	11
2.4.1	Installation with insertion sensor (example for batch pans)	11
2.4.2	Installation with rinsing insertion sensor (for continuous pans)	12
<b>3</b>	<b>Menu topology and operation handling</b>	<b>13</b>
3.1	Standard operation of the AIO device	13
3.2	Operation via PC Remote	14
3.2.1	Connect the PC and AIO device unit with USB cable	14
3.2.2	The saved measuring data real time to PC	15
3.2.3	Update the software of AIO device	16
3.2.4	Starting of the “u-ICC remote”	17
3.2.5	Setting of the parameters with Program “ $\mu$ -ICC remote”	19
<b>4</b>	<b>Initial Start Up</b>	<b>21</b>
4.1	Language	21
4.2	Date and Time	21
4.3	System Reset	21
4.4	Locking Keyboard	22
4.4.1	Changing PIN number	22
4.4.2	Keyboard locking	22
4.4.3	Keyboard unlocking	22
<b>5</b>	<b>Initial Sensor Configuration</b>	<b>23</b>
5.1	Measurement mode	23
5.2	Amplification	23
5.3	Measurement	24
5.3.1	Temperature compensation	24
5.3.2	Start coefficients	24
5.3.3	Reference Point	25
5.4	Other Settings	26
5.4.1	Sensor Description	26
5.4.2	Current Interface	26
<b>6</b>	<b>Data logging</b>	<b>27</b>
6.1	SD Card	27
6.2	USB HID	28
<b>7</b>	<b>System Calibration</b>	<b>29</b>
7.1	Sampling	29
7.2	Initial Calibration	29
7.3	Phase correction with level	31
<b>8</b>	<b>Sensor Settings: save and reload</b>	<b>32</b>
8.1	Sensor: Save settings, Load settings, Factory settings	32
8.1.1	Saving the configuration	32

8.1.2	Loading the saved configuration .....	32
8.1.3	Reloading factory settings .....	32
8.2	Memory allocation: Load and Delete Internal and External Memory .....	32
8.2.1	Copying of configuration.....	32
8.2.2	Deleting of configuration.....	33
8.2.3	Deleting of all memory.....	33
<b>9</b>	<b>Moving of the measurement range.....</b>	<b>34</b>
<b>10</b>	<b>Troubleshooting .....</b>	<b>35</b>
10.1	PIN is not working .....	35
10.2	Constant offset.....	35
<b>11</b>	<b>Technical specifications.....</b>	<b>36</b>
<b>12</b>	<b>Dimensional drawings .....</b>	<b>37</b>
12.1.1	IC-D1007_revA_AIO_DN65-100-45A.....	37
12.1.2	IC-D1006_revA_AIO_DN65-200-60AC.....	38
12.1.3	CIP (connection of water pipeline).....	39

# 1 Safety instructions

## 1.1 Symbols and indications

In this manual, symbols are used to indicate varying risk levels.



Warning  
could be life threatening or cause serious injury



Attention  
could cause minor injuries



Notice  
possible material damage



Information  
application tips and helpful information

## 1.2 Normal usage

The  $\mu$ -ICC 2.45 AIO device is a measurement system based on microwave transmission technology. To ensure safety, a very low level of microwave radiation is passed through the process stream. The microwave power levels used are completely harmless to humans and the environment. No change of product properties can occur.



This measurement system has been designed according to the most recent safety requirements for microwave devices. If there are legal regulations regarding the use of microwaves, the user has the responsibility to observe them.

It is forbidden to change the frequency of the device. Illicit manipulation of the device could have legal consequences.

## 1.3 General safety & user warnings

The  $\mu$ -ICC 2.45 AIO device has been built using state-of-the-art technology components and complies with all current safety standards. The housing is certified IP 65 and therefore well adapted for outdoor use. Full testing at the factory ensures proper system function and long term reliability.



The safety and warning notices must be strictly adhered to, so as to guarantee safe operation. Use of the system is only allowed if it is in good order and condition. Only adequately trained personnel must be allowed to operate the system. System redesign or any unauthorized changes might have an impact on product safety and are therefore expressly forbidden.

### 1.3.1 Environmental conditions

**NOTICE**

All components should be transported, stocked and operated in a non-corrosive environment.

### 1.3.2 Electrical

**WARNING**

The power supply must be disconnected during system installation and service interventions so as to prevent any contact with energized parts.

Before opening the evaluation unit, the power supply must be securely interrupted. It is forbidden to work with the device opened while powered up.

**NOTICE**

Spare fuses must have the manufacturer specified values. Short circuiting the fuse position or any other manipulation is forbidden!

**NOTICE**

The evaluation unit must remain grounded when it is mains-connected.

**ATTENTION**

If fluids have entered the device, it must be immediately disconnected from the power supply. The device must then be thoroughly checked and cleaned by an authorized person.

**NOTICE**

Without exact knowledge of this manual, no adjustments must be made to the installation or any parameter setting for that matter. Behaviour of the actuator and its influence on the process must also be known.

## 2 System description $\mu$ -ICC 2.45 AIO device

The  $\mu$ -ICC 2.45 AIO device is a measuring device which combines AIO device design with the highest technical standards in microwave measurement. The system concept is based on many years of successful experience with the proMtec  $\mu$ -ICC 2.45 product version.

In addition to a highly AIO device housing and an improved memory mode, this device offers many new features such as higher class components, Data interface with Bluetooth function or USB interface for connection with a PC. The device is placed in the immediate vicinity of the measurement point, and is directly connected to the microwave sensor probes.

This manual is intended to help you discover the ease of operation and the versatility of this system.

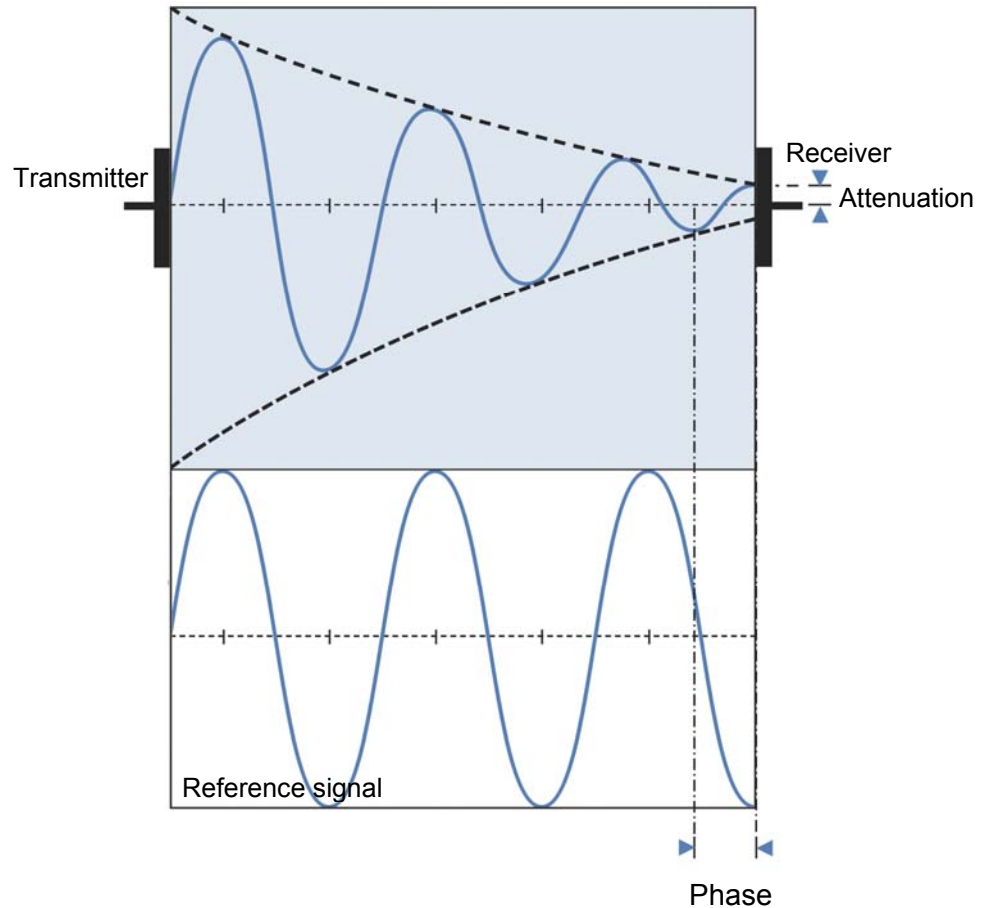
### 2.1 Measurement principle



The measurement uses the dielectric constant of the process sample to measure its total solids content. Water containing samples streams are in general ideal for measurement, because the microwaves are highly absorbed by the free water molecules.

Also of importance is the distance between the sensor probes. The signal strength must be sufficient to pass completely through the sample stream from the transmitter to the receiver. ProMtec optimizes the geometry for each application.

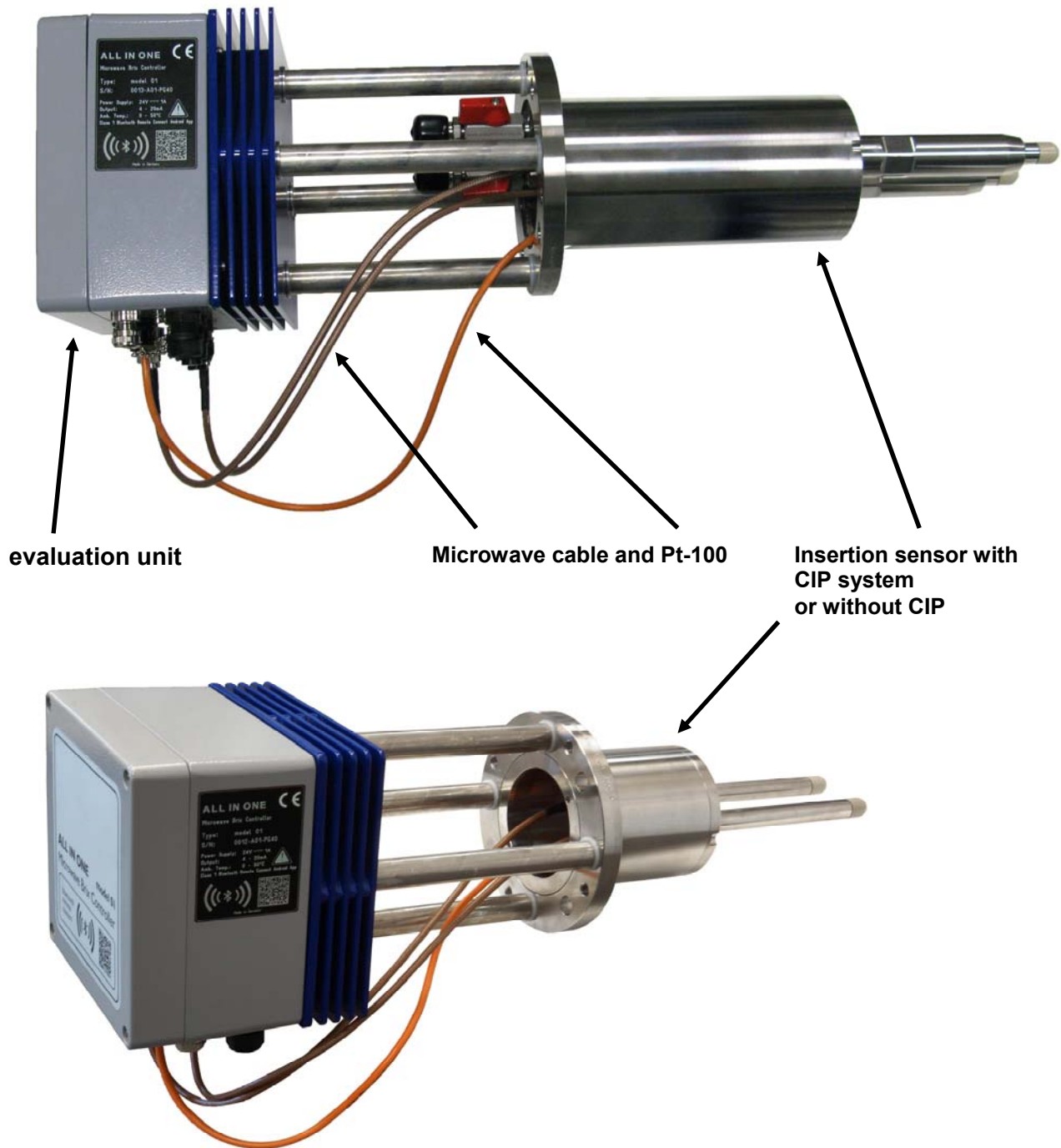
## System description $\mu$ -ICC 2.45 AIO device



- The microwave signal is radiated into the medium by the transmitter. The receiver collects the attenuated microwaves.
- The reference signal represents the original micro-wave signal without the sample stream influences. It is used in comparison with the sample stream attenuated microwave signal to calculate a phase shift (decrease of propagation velocity) or the attenuation of the signal.
- The phase shift occurs proportionally to the propagation velocity
- With this information the water content can be calculated, from which both the density and total dry matter content can be derived.

## 2.2 Components

The measurement system is composed of two components – the evaluation unit and the sensor modules. The sensor module is mounted into a vessel (insertion sensor probes) and connected via microwave cables with the evaluation unit. A temperature sensor (Pt 100) has been connected for this purpose, and is always part of the system.





proMtec offers an entire range of sensor types. Depending on the application at hand, proMtec designs the most appropriate sensor type for your process.

The insertion sensor with CIP system or without has two probes and a special flange DN65 for installation in vessels. The evaluation unit is directly connected via microwave cables.

The half meter microwave cables are used to carry the sensor module signal to and from the measurement point. These cables are produced in according to the newest technology and an optimally shielded to ensure lowest possible measurement signal transmission losses.

A Pt-100 temperature sensor is integrated into the flange of the sensor probes. A four-wire cable must be connected between the already integrated Pt-100 and on the other side with the connectors inside the evaluation unit (read chapter 2.3.1).

## 2.3 Installation

### 2.3.1 Connections and dimensions of the evaluation unit

For an overview of the circuit interconnections and how to connect them, please refer to the following connection list.



Before opening the evaluation unit and connecting any cable, the power supply must be disconnected!

#### NOTICE

Choose an appropriate location where cables are not under tension!

Do not whip or kink the microwave cables!

While connecting the 4-20 mA signal output pay attention to the polarity! This signal output is a regulated current output.

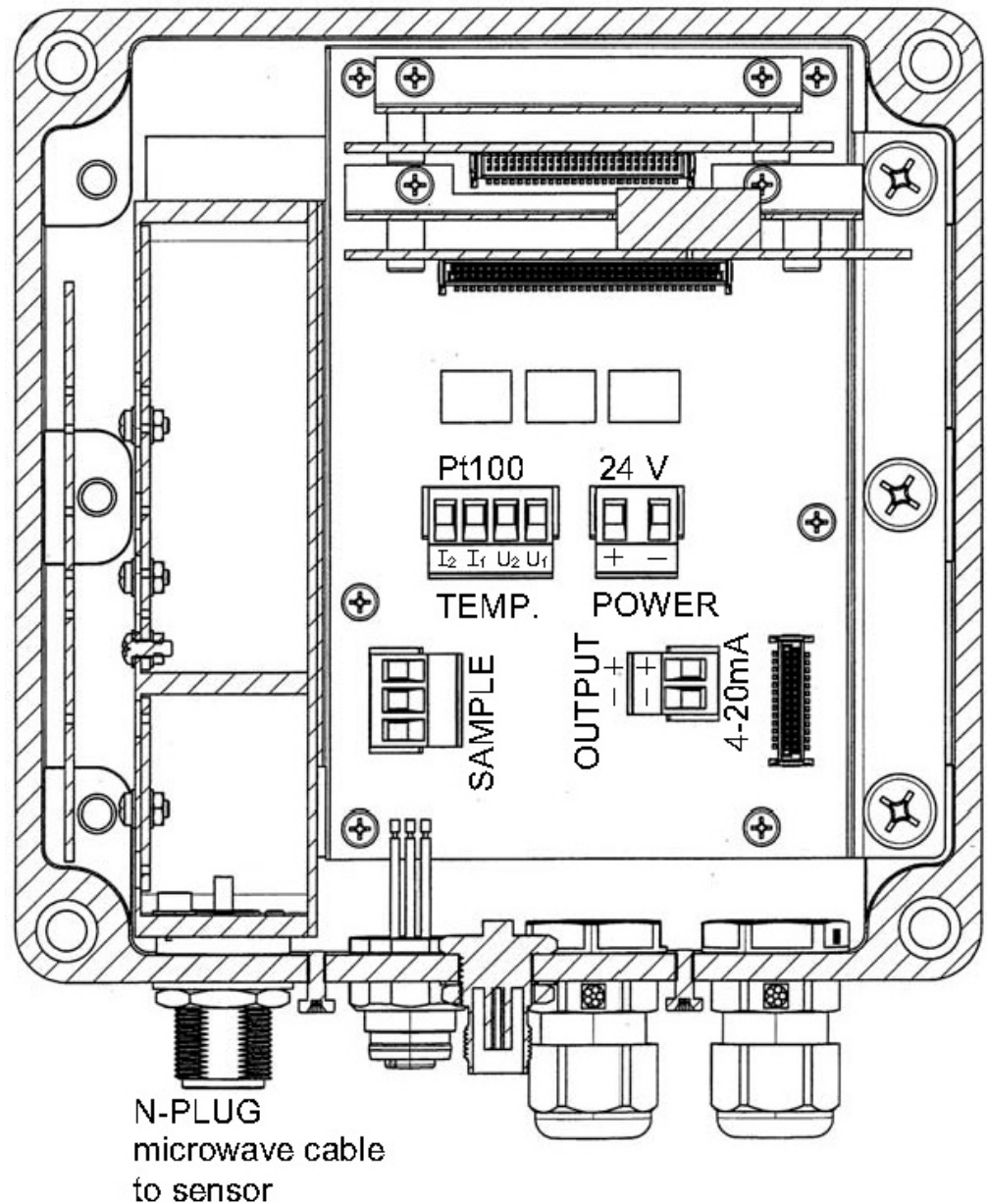
Do not over tighten the coupling nuts on the evaluation unit too much!

#### i

#### Connections:

- Microwave cables: Two identical microwave cables are provided; one for the transmitter and one for the receiver sensor module. Both have standard N-Plugs and it doesn't matter, which of them is used for the "T"-Plug or the "R"-Plug.
- Pt 100 (4 wire): M12 plug
- Pt 100 (2 wire): Cable entry (M12)
- Power supply: 24 Voltage direct current (cable entry M16)
- Signal output: 4 – 20mA (4 wire M12 or cable entry M16)
- Sample push-button: M12 plug
- Data transfer: USB port for connection via PC
- Options: Cable entry (M16)

Connections inside the device:



If you're using an insertion sensor, in the basic system there is a Pt 100 with two wire connections. In this case the plug-in is already shunted.

If you want to connect your own two wired Pt 100 you have to shunt **I2** with **U2** and also **I1** with **U1**, as shown below.

## System description $\mu$ -ICC 2.45 AIO device



shunted Pt 100 connector



connected 2 wire Pt 100



For further modifications there are four other connectors in the product range, all with different dimensions as shown below.



## 2.4 Installation recommendations

### 2.4.1 Installation with insertion sensor (example for batch pans)



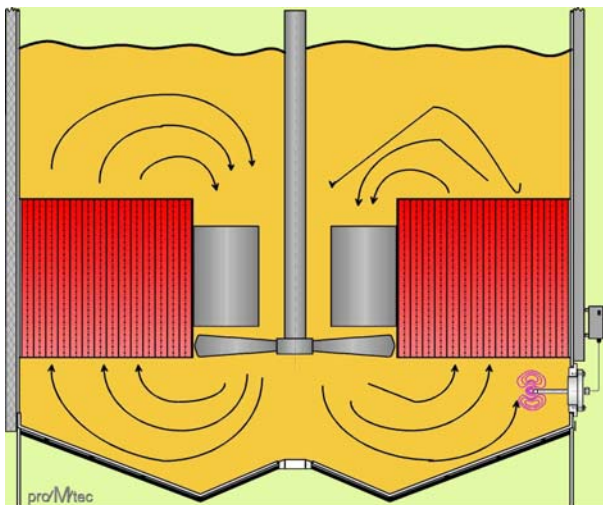
In order to ensure a reliable measurement it is necessary to have a good flow through the sensors. They should be mounted below the calandria. In fact the measurement is influenced by foam and air and/or steam bubbles. Below the calandria there are generally less bubbles. Some calandrias have a sample valve by-pass. It is not suited to install the sensor there because of the very bad masse cuite flow.



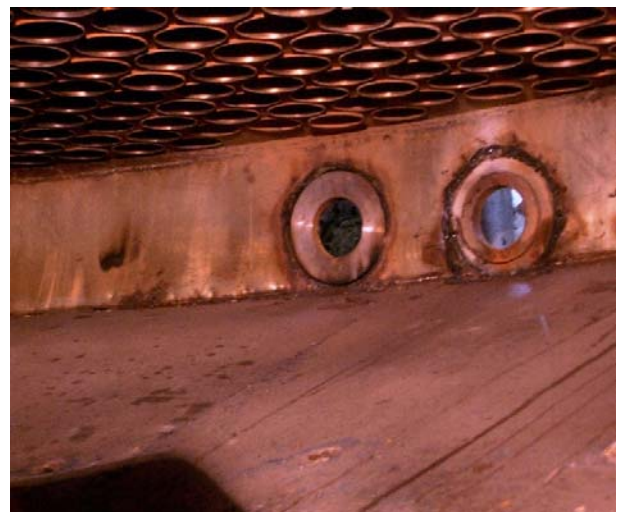
To calibrate correctly, good samples are needed. If you see that the measurement parameters change quickly while taking the sample, first make the reading, then take the sample and then, after a while, confirm that the reading is coming back again.



The following pictures show an installation in the side wall. It has the advantage that the microwave module is not exposed to a very high temperature. The minimum distance between the calandria and the sensor tips should be 100 mm.



Position of Insertion sensor



Installation flange below the calandria

### 2.4.2 Installation with rinsing insertion sensor (for continuous pans)



As the continuous pans are not submitted to a periodic steaming-out, the proMtec microwave sensors are fitted by CIP (cleaning in place). The cleaning medium can be hot water with high pressure or steam. The 3 rinsing water channels (two for microwave sensors and one for the Pt100) must be activated one after the other for 10-15 seconds to ensure high pressure. The CIP can be preceded manually or automatically. proMtec does recommend the last one. Depending upon the product to be measured, the time between two rinsing cycles can be 1-2 hours for the 1<sup>st</sup> product, 3-4 hours the 2<sup>nd</sup> and 7-8 hours for the 3<sup>rd</sup>.

(see the last page of installation's drawing)



As written above, the measurement reacts on air bubbles. Any leakage in or next to the sensor causes bubbles (vacuum) thus deviating the reading. To check the leakage there are several hints: Rinse of juice below the sensor. This occurs while or after Steaming out Shaking of the pan Upcoming air bubbles trough the masse cuite on the side wall of the pan



In order to get a reliable measurement it is necessary to have a steady flow in the immediate vicinity of the sensor. This avoids caking of the sensor probes. If the product should contain any air or steam bubbles, they will influence the measurement. If air bubbles present in the sample stream can create be abnormal reflections of the microwaves and therefore an inexact concentration value.

To avoid this, it is recommended to install the sensors in a rising pipe segment after the pump (pump outlet). This installation ensures an air bubble-free sample stream.

Usually the process stream in a tube is more homogeneous than that found in a tank installation.

## 3 Menu topology and operation handling

### 3.1 Standard operation of the AIO device

The evaluation unit uses the data from its integrated microwave module. A number of helpful values are displayed on the screen; the current measurement value, the phase shift (raw and compensated), the temperature and the level. The values are also presented in bar graph form with trace (drag pointer) which shows the evolution of the measurement.



The „**System**” main menu after power-up is offers the following submenus:

Sensor:	setting of parameters during configuration and system calibration
Base configuration:	default settings (language, date & time), memory storage options, etc.
Memory allocation:	storage of sensor settings and parameters
Error status:	overview with error number in case of any problems
Service:	reserved for proMtec maintenance personnel

Various submenus are explained more precisely in the following chapters.



## 3.2 Operation via PC Remote

The device can be operated via PC remote control. This option is integrated in the software “**proMtec  $\mu$ -ICC 2.45 Compact microwave**”.



With the first using of the PC remote control you have to install the setup file. Therefore please follow the included Readme file.

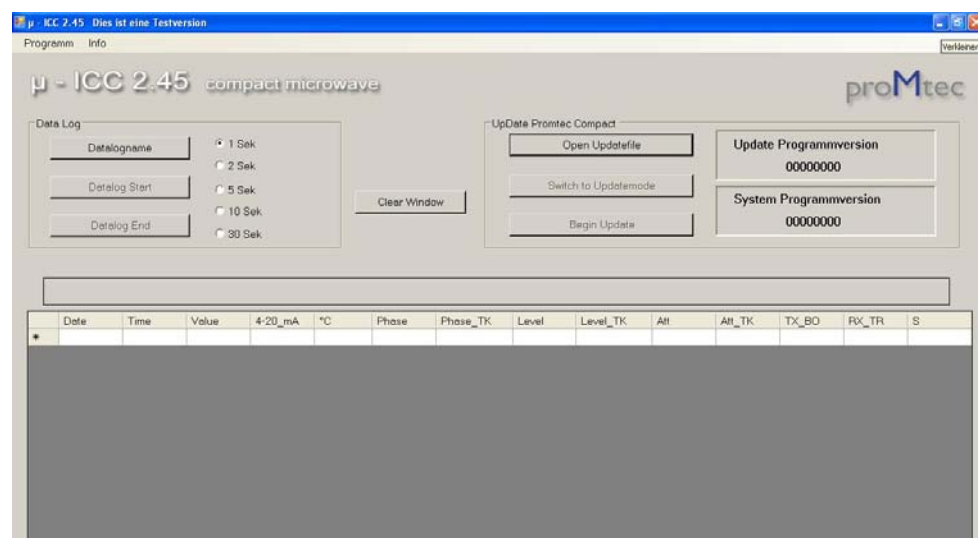
For a successful installation there is also needed **.NET Framework version 3.5**. If there is no current version installed on your PC, the setup file will also install “**dotnetfx35**”, which is also available on the CD.

### 3.2.1 Connect the PC and AIO device unit with USB cable

- Before you want to start setting and calibrating of the AIO device, you have to connect the PC or Laptop and AIO device unit with USB cable (2.0 28AWG/1P+26AWG/2C 2725 80°C 30V), it is a normal cable for printer. (See the picture)



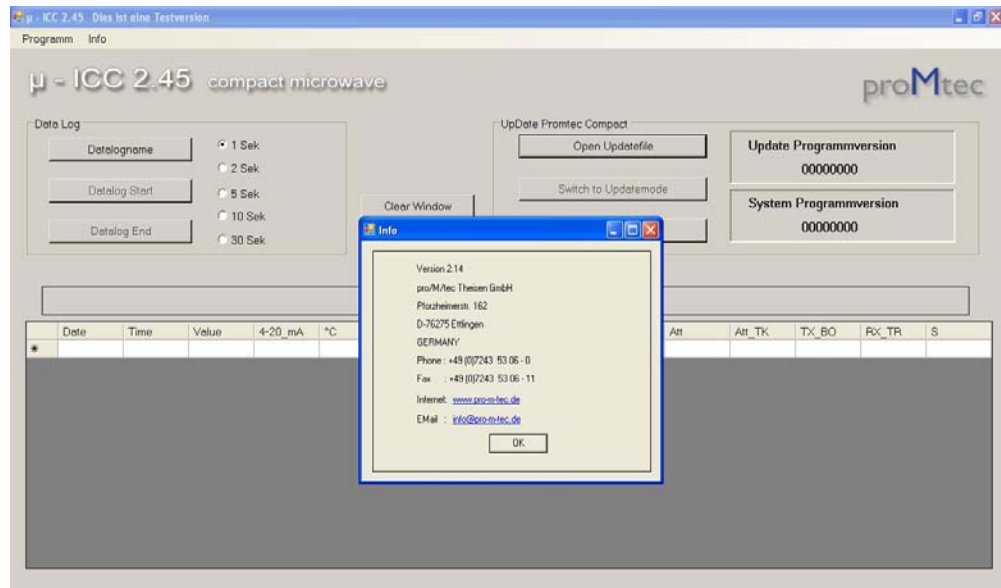
- Start the software “**uCC\_PC Remote**”, you will see this window:



- If you want to find the Information about the software version, you could click “**info**”.

## Menu topology and operation handling

- Example: This Version 2.14 of remote is for the version TE10-00.39 20 of AIO device.

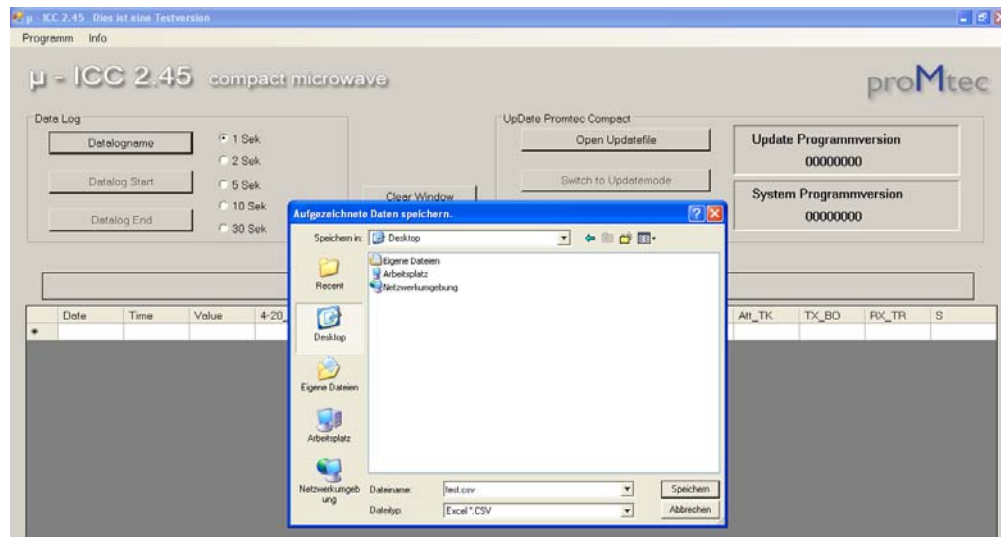


### 3.2.2 The saved measuring data real time to PC



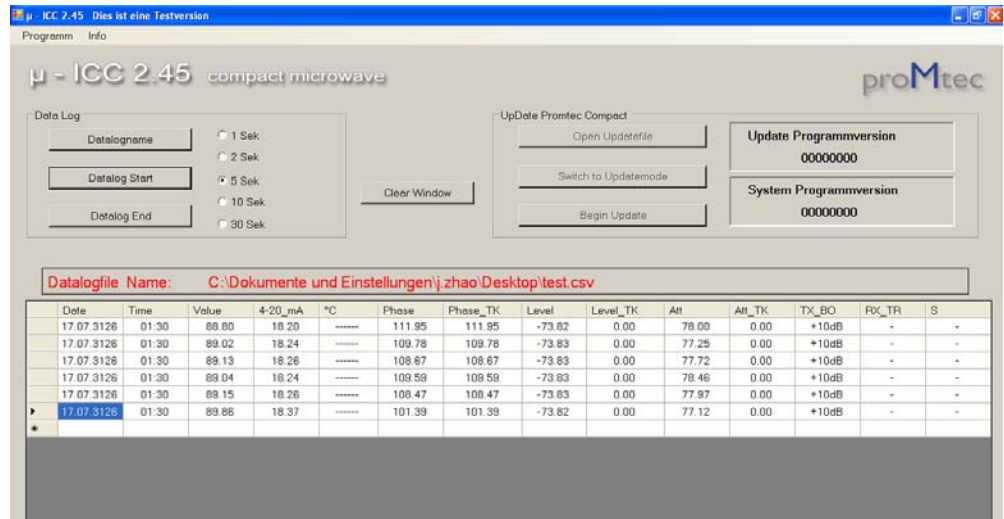
If you want to read the real time measuring data in the PC, is also possible. Only connect the PC and AIO device unit.

- Please start “**proMtec μ-ICC 2.45 Compact microwave**”, at the left side “**Data Log**”, you click “**Datalogname**” and save the data at a Data name.



- Now you can select the time how many second you want to transfer the data? Then you can start data transmission.



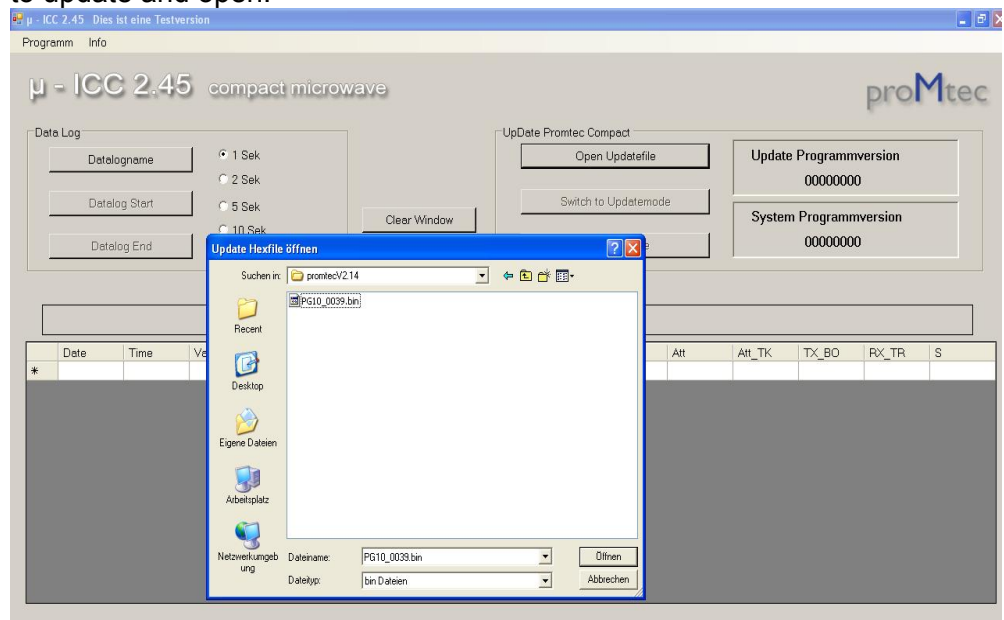


→ If you want to stop, please select “**Datalog End**”, the data will be automatic saved at data name.

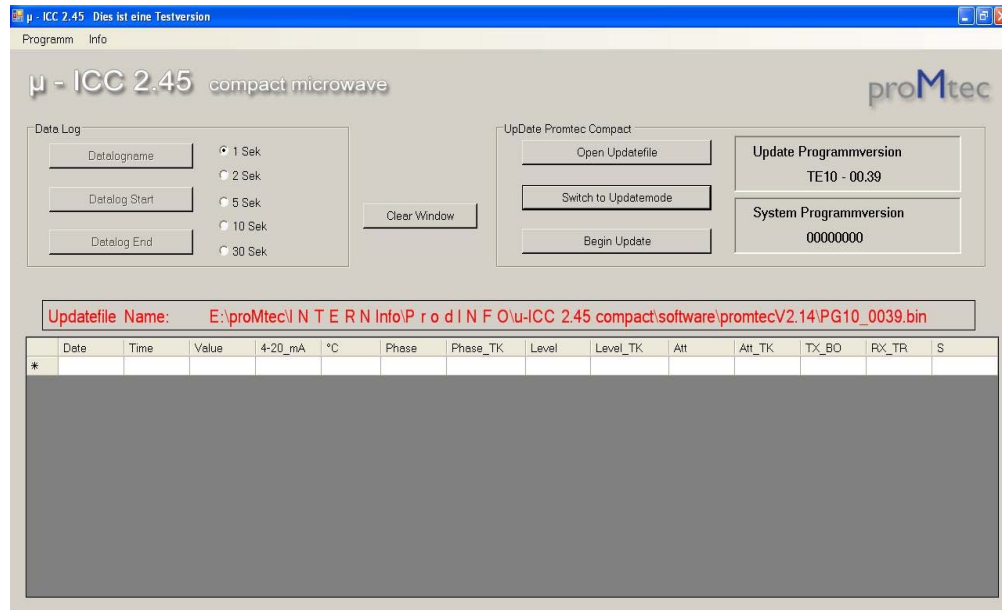
### 3.2.3 Update the software of AIO device

Before starting the “μ-ICC 2.45 data log and update” software should be sure to choose the USB HID mode.

→ You can update the software of AIO device unit in PC, please see the “click” at the right side of program window: “**UpDate Promtec AIO device**”, and click “**Open Updatefile**”, please choice an Update-data which one you want to update and open.



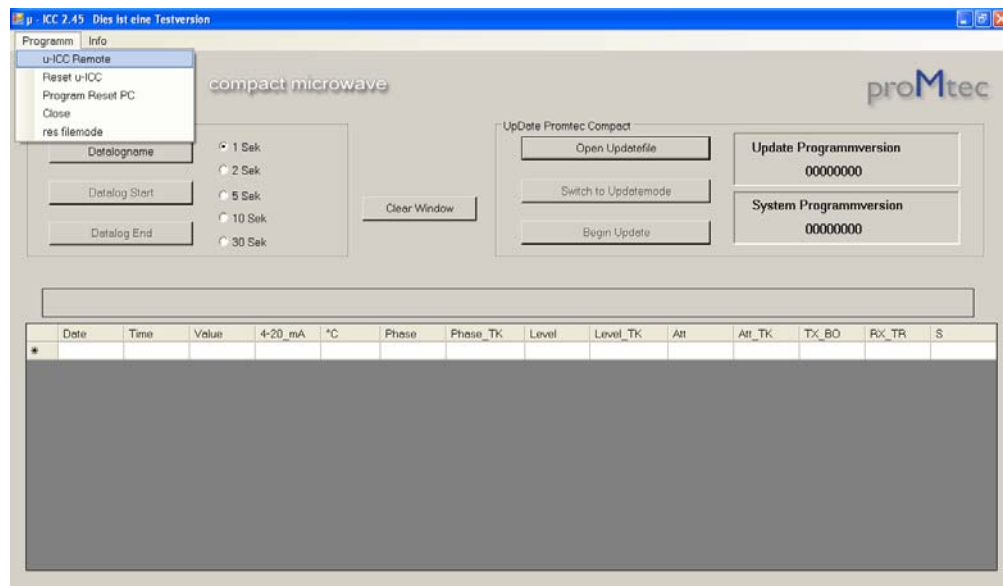
→ Later you must click the “**switch to Updatemode**” again to confirm.



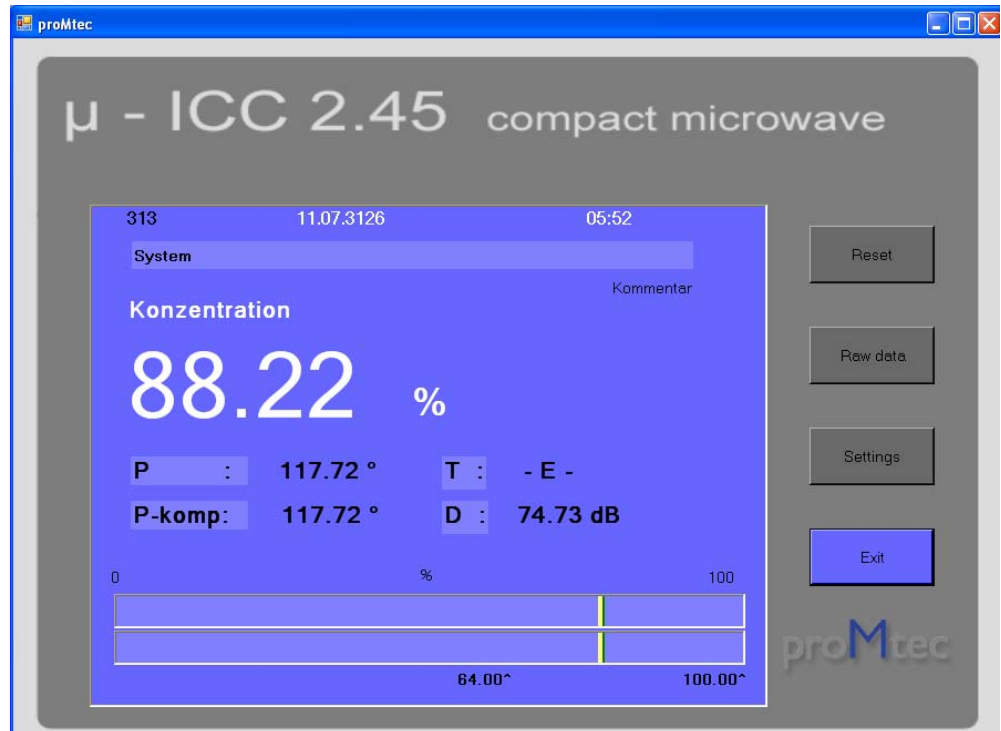
→ At the end please click **“Begin Update”** to finish the update process.

## 3.2.4 Starting of the “u-ICC remote”

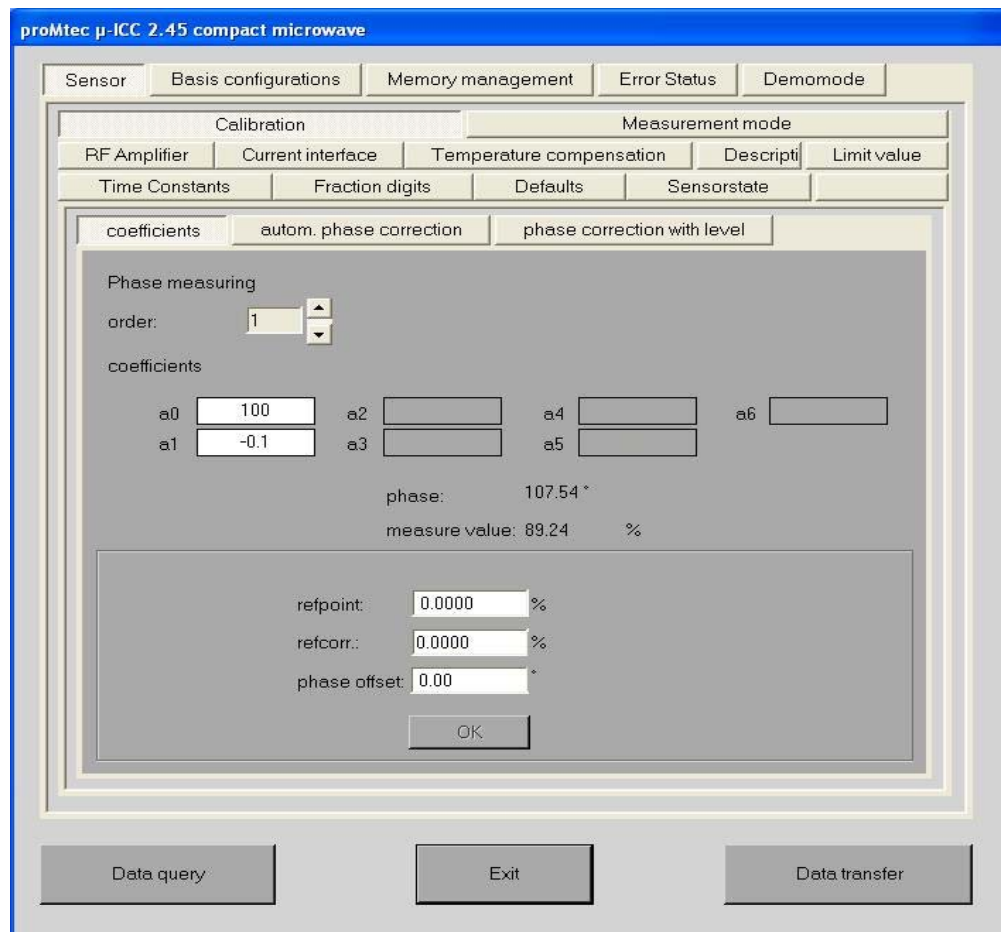
→ Please select **„Programm“** in **“proMtec μ-ICC 2.45 Compact microwave”**, and click **“u-ICC Remote”** (see the picture), now if you haven’t connected the AIO device unit and PC, you will read a warning **“no u-ICC connected”**. Please connect the unit again.



## Menu topology and operation handling



→ In this window you can click “**settings**”, and come into the setting window.



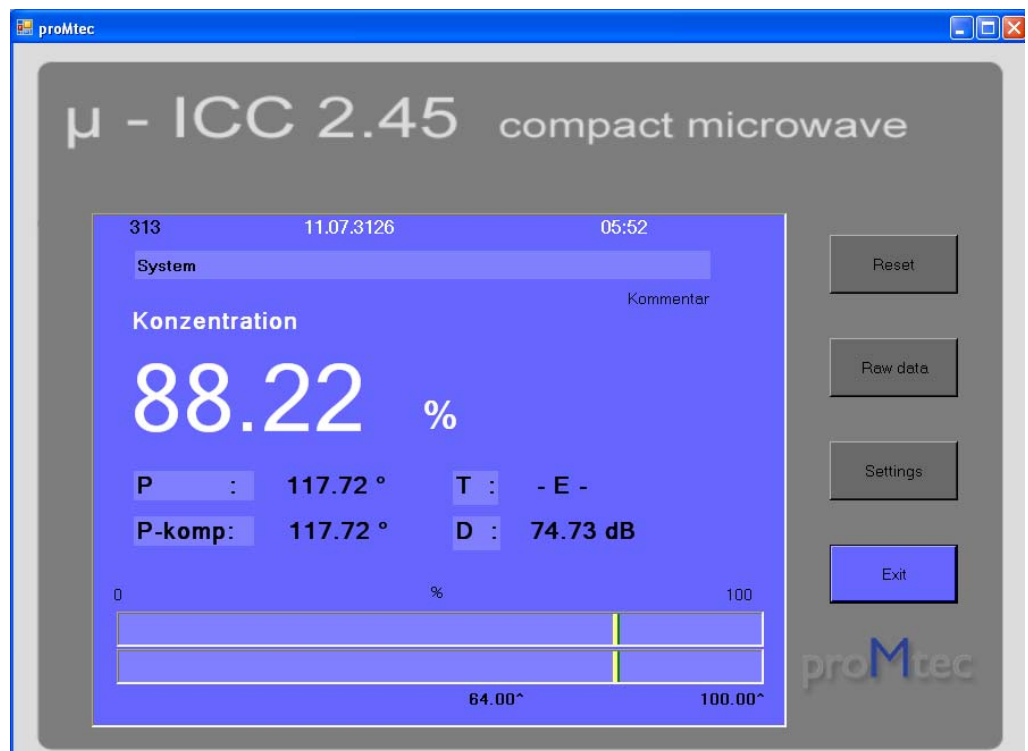
Now you can set the new values and calibrate.

### 3.2.5 Setting of the parameters with Program “ $\mu$ -ICC remote”

#### SYSTEM / BASIS CONFIGURATION / USB DEVICE

- Start “proMtec  $\mu$ -ICC 2.45 Compact microwave”, click on “Program” and then choose “u - ICC Remote”.

The window shown below then opens:

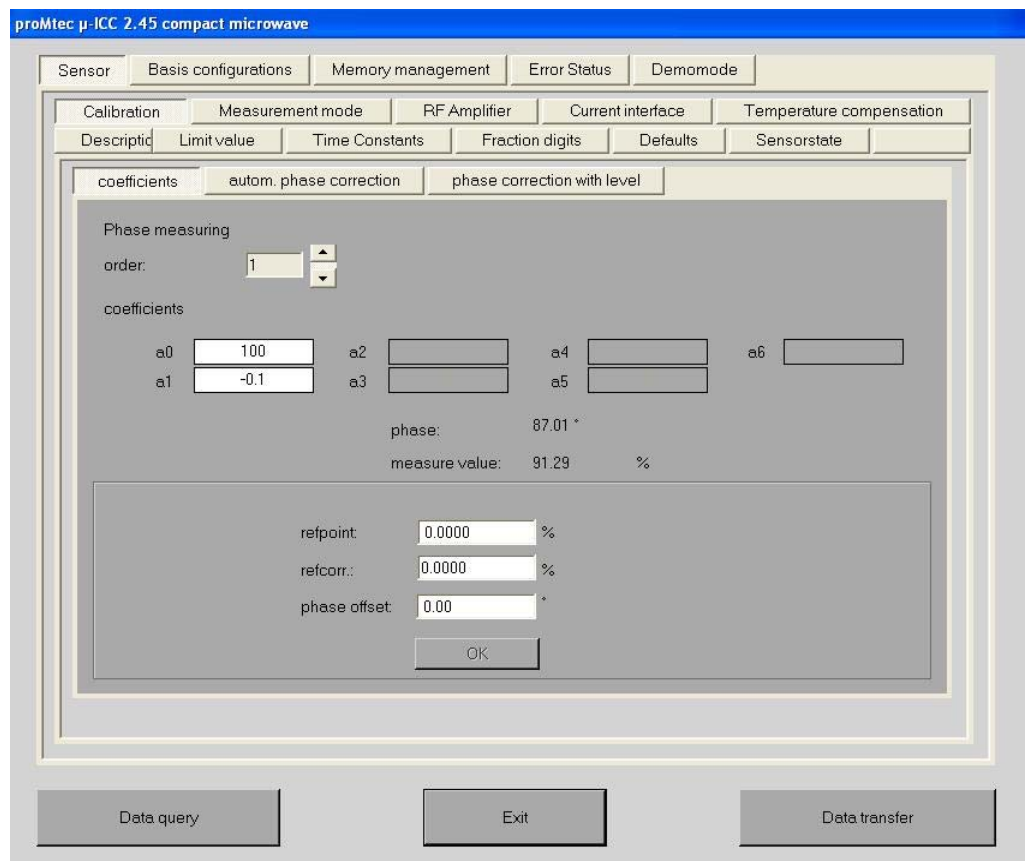


The main display appears as shown above and shows the current measurement value, signal phase, process stream temperature, compensated phase and absolute signal amplitude. This display is very similar to the device display.

To see the other values click on the button “**raw data**”.

- Now click on the button “**settings**”. A new window appears with the menus and submenus in tab format with a structure similar to the device menu structure.
- To refresh the current settings click on the button “**Data query**”, to transmit the settings to the device click on the button “**Data transfer**”.

## Menu topology and operation handling



→

To return to the main screen click on the button "Exit".

## 4 Initial Start Up



Before connecting the evaluation unit with power supply, make sure that the microwave sensors have been connected to the evaluation unit.

During initial start-up you should adjust the basic settings; e.g. date and time.

### 4.1 Language

#### SYSTEM / BASIS CONFIGURATION / LANGUAGE

First of all you can choose the language from Deutsch, English, Francais, Italiano, Español or Portugues-Standard.

- Starting from „**System**” main menu (by pressing F4), select „**Basis configuration**”, and then select “**Language**”. You can now select your preferred language by “▲” and “▼” and confirm with “**OK**” button.

### 4.2 Date and Time

#### SYSTEM / BASIS CONFIGURATION / DATE TIME

Here you can set the date and time.

- Starting from „**System**” main menu, select „**Basis configuration**”, then „**Date /Time**” and „**Time**” can be entered with “▲” and “▶” buttons and confirmed with “**OK**” button. The „**Date**” can be selected and entered in the same way.

### 4.3 System Reset

#### SYSTEM / BASIS CONFIGURATION / RESET



After making configuration modifications it might be necessary to make a system reset (e.g. system does not work correctly after new entries).

- Starting from „**System**” main menu, select „**Basis configuration**” then „**Reset**”. Afterwards confirm by „**YES**” button and finally confirm with “**OK**” button.

## 4.4 Locking Keyboard

### SYSTEM / BASIS CONFIGURATION / PIN-Nr.

Here you can block the keyboard. This avoids any unauthorized change of the sensor configuration parameters. Nevertheless it is still possible to check some of them.



Should you forget the PIN number please get in contact with proMtec.

#### 4.4.1 Changing PIN number

- Starting from „**System**” main menu, select „**Basis configuration**” then chose „**PIN-Nr. Keyboard barrier**”. Afterwards change the PIN-Nr.



The initial PIN is “000000”. It can be changed anytime by the operator.

#### 4.4.2 Keyboard locking

- Starting from „**System**” main menu, select „**Basis configuration**” afterwards chose „**PIN-Nr. Keyboard barrier**” then „**Block Keyboard input**” and confirm with “**OK**”. You will then have to enter „ **Pin-Nr.**” And confirm with “**OK**”. The lock indicator lights red.

#### 4.4.3 Keyboard unlocking

- Starting from „**System**” main menu, select „**Basis configuration**” afterwards please select „**PIN-Nr. Keyboard barrier**” then „**Release Keyboard input**” and confirm it with “**OK**” .You will then have to enter „ **Pin-Nr**” and confirm with “**OK**” . The red lock indicator then turns off.

## 5 Initial Sensor Configuration

Here you can adjust the initial sensor settings.

### 5.1 Measurement mode

#### SYSTEM / SENSOR / MEASUREMENT

At the start, you will first have to choose a measurement mode.

There are three different measuring modes:

- Phase measuring (default setting)
- Level measuring
- Attenuation measuring



Which measuring mode is the most suitable depends entirely on the application. In most cases, especially in the sugar factories, the phase measurement best fits the application.

If you're not getting good results with the chosen measurement mode, please contact us at proMtec.



Starting from „**System**” main menu, select „**Sensor**” then „**Measurement**”. Now select e.g. „**Phase measuring**” and select „**OK**” and confirm it again with „**OK**”.

### 5.2 Amplification

#### SYSTEM / SENSOR / RF AMPLIFIER



At the beginning you have to be sure that the microwave signal is strong enough. The attenuation level should be between 25 and 60 dB respectively 3 and 8 Volts while operating under normal process conditions (the microwave sensors must be covered by flowing process stream).

If the signal is too weak, you can strengthen it in two ways:

- TX-Booster (10/ 20 dB)
- RX-Transponder (20/ 40 dB)

The most suitable microwave signal amplification must be chosen according to the particular application. Usually we recommend trying first with the Booster, and then with the Transponder. In special cases, it is also possible to combine these two amplification methods.



Starting from „**System**” main menu, select „**Sensor**” then „**RF Amplifier**”. Now select e.g. „**TX-Booster**” and switch from „**OFF**” to „**+10 dB**” or „**+20 dB**” depending on the amplification level needed.



## 5.3 Measurement

The following settings are necessary for accurate measurements.

### 5.3.1 Temperature compensation

#### SYSTEM / SENSOR / TEMP.COMPENSATION



The microwave signal is influenced by temperature changes of the medium. As a result, the phase shift has to be temperature compensated. Therefore you have to define both the temperature reference **Tref** and the temperature coefficient **Tk**.

For the reference temperature you should usually take an average temperature over the whole process.

The temperature coefficient should be set as **Tk= -1.5000e+00** initially. This value can then be adjusted as required.

In the sugar industry:

For the batch pans **Tref** should be set to the seeding point temperature.

The temperature coefficient for sugar products (juice, syrup, masse cuite...) we recommend setting **Tk = +3,0000e+00**.

→ Starting from „**System**” main menu, select „**Sensor**” then „**Temperature compensation**”. Select „**Temp. corr**” and switch from „**OFF**” to „**ON**” in order to activate temperature compensation, confirm with „**OK**” button. Now select „**reference temp**” and enter the desired temperature and confirm with the „**OK**” button. Finally enter **Tk** as above.

### 5.3.2 Start coefficients

#### SYSTEM / SENSOR / CALIBRATION / COEFFICIENTS



The measurement system needs to be calibrated using the laboratory results. To do this, the start coefficients must be set.

The coefficients **A<sub>0</sub>** and **A<sub>1</sub>** are the Offset and the slope of the following formula:

$$Y=A_1X + A_0$$

**X**- Compensated Phase shift

**Y**- Measurement in the chosen physical units.

**A<sub>0</sub>** and **A<sub>1</sub>** define the measurement range. It can be calculated as follows:

Upper end of the measurement range = **A0**

Lower end of the measurement range = **(A1\*360) +A0**

We usually take the maximum measurable value (with certain reservations) as **A0**. **A1** is the microwave's absorption coefficient and depends on the distance between the sensor probes and the process stream between them.

The measurement range appears on the display below the bar graph (drag pointer).

Example:

For a batch pan application with a distance between sensor probes of 45mm, we usually have start coefficients of **A0=100** and **A1=-0.1**. They result in a measurement range of 64-100 Brix.

For a continuous pan application with a distance between sensor probes of 60mm the start coefficients are usually: **A0=100** and **A1=-0.075**. These result in a measurement range of 73-100Bx.



If the measurement range is too small and there is a risk of exceeding this range the phase correction with signal attenuation level should be employed (please read the section 5.3.4 phase correction with signal attenuation level).



Starting from „**System**” main menu please select „**Sensor**”, „**Calibration**” and finally „**Coefficients**”. Afterwards enter the coefficients A0 and A1 corresponding to the application.

### 5.3.3 Reference Point

#### SYSTEM / SENSOR / CALIBRATION



At the beginning of every start-up it is necessary to position the scale of the measurement with a reference phase value. A sample must be taken and analysed and the resulting value entered in the evaluation unit as quickly as possible. For this operation there is no need to be accurate; a hand refract meter reading is sufficient. The process must, however, be under steady state conditions.

For batch pans:

We usually take samples after the pan has been filled and just before seeding.

For other applications:

We take samples under normal process conditions.

There is no need to change the phase offset manually. It's automatically adjusted by the system upon setting the reference point. In turn, the reference point changes automatically every time we change A0.



In general, the reference correction (“**ref-corr**”) should not be changed (always set to 0).



Starting from „**System**” main menu please select „**Sensor**”, Then „**Calibration**” followed by „**ref-point**”, then select „**YES**” and confirm with “**OK**” button, finally enter the value.

The displayed measurement is now equal to the reference point.

## 5.4 Other Settings

### 5.4.1 Sensor Description

#### SYSTEM / SENSOR / DESCRIPTION

You should set a description of the measurement for each application.

- Select „**Description**” and confirm with “**OK**” button. Selecting then „**Product name**”, „**Comment**”, „**Phys. Measurement item**” and „**Phys. unit**” enable you to display information concerning the application that is stored in the unit’s memory.

#### Example: Physical Unit

#### SYSTEM / SENSOR / DESCRIPTION / PHYS.UNIT

- Select „**Phys. unit**” and confirm with “**OK**” button. Select desired unit (Bx, %, g/l, g/cm<sup>3</sup>...) using “▲” and “▼” buttons and confirm with “**OK**” button.

### 5.4.2 Current Interface

#### SYSTEM / SENSOR / CURRENT INTERFACE

You can scale the 4-20 mA current output to the corresponding measurement range as follows:

- Select „**Current interface**” and confirm with “**OK**” button. Then select „**current output**”, choose the desired output signal (0-20 mA or 4-20 mA), and confirm with “**OK**” button.

Example:

Enter the output values for the desired scale (e.g. 70 as 4mA and 100 as 20mA) These inputs result in a measurement range of 70 to 100 (Brix). The evaluation unit displays this range above the bar graph (drag pointer).

There is a test function for the current output. It can be activated by switching „**Test current**” from „**OFF**” to „**ON**” and by confirming with «OK» button. In this fashion the output can be controlled from the control room.

The test current value can be given directly in mA (e.g. Test current: 12 mA)

- The „**Calibration**” function of the „**Current interface**” menu allows regulation of 4 mA and 20 mA by using the **F2** (+) and **F3** (-) buttons. To start regulation, a mA ammeter must be connected to the current output connector pins.

## 6 Data logging

Two data logging options are available. By connecting a PC data can be recorded and stored directly on the hard disk drive. Alternatively the data can be stored on the evaluation unit's internal SD card.



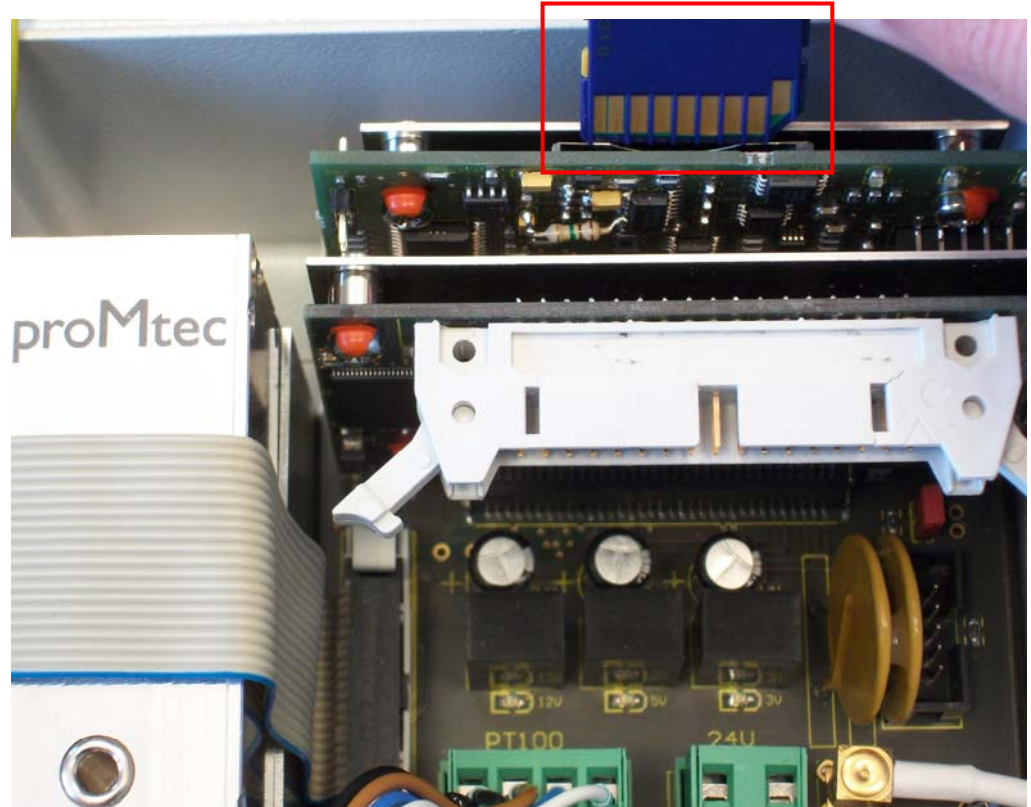
Before connecting a PC or starting to log on the SD card you must first choose one of the above and confirm it.

### 6.1 SD Card



In the basic system by default there is SD card already inserted.

To change the SD card you have to open the cover.



Remember to disconnect the power supply before removing the cover.



You can run with continuous data logging. In this case, when the SD card memory is full the memory's first data positions will be overwritten.

#### **SYSTEM / BASIS CONFIGURATION / SD CARD**



Select „**System**”, „**Basis configuration**” and „**SD Card**”, then „**Data log**” and switch it from „**OFF**” to „**ON**” and confirm with “**OK**” button.

Also included in this menu item there is the possibility to adjust the frequency of the data storage.

- To do this choose „**Log time**” and enter the data storage interval desired. By default there is a value of 10 seconds.



To read the data there is no need to remove the SD card. It can be simply accessed and read from the USB interface. In this case the AIO device has to act as a memory device. To activate this mode you must choose “**USB memory device**”.

### SYSTEM / BASIS CONFIGURATION / USB DEVICE

- Select „**System**”, „**Basis configuration**” and „**USB device**”. Now select „**USB Memory Device**” and confirm with “**OK**” button.

You can now access the SD card as a removable disk.

## 6.2 USB HID



Additionally there is the option to update the system software. In general this is only done by proMtec staff. For more details please contact us.



For assistance in installing and operating the software read chapter “**3.2 Operation via PC Remote**”.

Before starting the “**μ-ICC 2.45 data log and update**” software should be sure to choose the USB HID mode.

### SYSTEM / BASIS CONFIGURATION / USB DEVICE

- Select „**System**”, „**Basis configuration**” and „**USB device**”. Now select „**USB HID**” and confirm with “**OK**” button.

Now you have to choose a datalog name for data storage in an excel file. After that you can start data logging. (Please read chapter “3.2.2”.)

## 7 System Calibration



Before calibration it is important to determine the initial sensor configuration (please read chapter 5).

### 7.1 Sampling



For calibration it is necessary to take samples over the whole process and have them analyzed evaluate in the laboratory. While sampling the process must be under steady state conditions. A minimum of 5 to 8 samples must be taken, which cover the complete measurement range.

Example for sugar industry:

For batch pans it is recommended to take 3 samples before the seeding point and at least 5 following it.



For each sample note following data:

Date and time of sample taking

Displayed current measurement value (in corresponding units)

Phase shift (P in °)

Temperature (T in °C)

Compensated phase shift (P-comp in °)

Signal Attenuation Level (L in - dBm)

Attenuation (in dB)

Volts (in V)



You can either note these values manually or simply switch on data log to record them on the integrated SD card. Additionally, a sample push-button can be used to mark the logged data at the time the sample is taken.

### 7.2 Initial Calibration



After sampling, enter these current measurement values into the excel file "IBN" in the column provided and add the corresponding laboratory values to the column „**labor (Y-Axis)**".



With these values the new settings will be calculated. Samples which are not used for the calibration should be placed in the field „**Labor not used**". The remaining columns are only for the calculation and may not have to be changed. They only have to be copied into the rows below.

In addition you have to enter the initial settings such as A0, A1, ref-point and p-offset (previously entered initial settings).



The new settings (A0, A1) are automatically calculated and can be read from the sheet "calibration data" and also from the sheet "trend" (form:  $Y = a1 * x + a0$  and the correlation coefficient  $R^2$ ).

The correlation coefficient  $R^2$  should be nearly 1 proving that the sampling was representative and that the new coefficients can be entered in the evaluation unit. In the sheet „trend“, you can compare the various settings graphically.

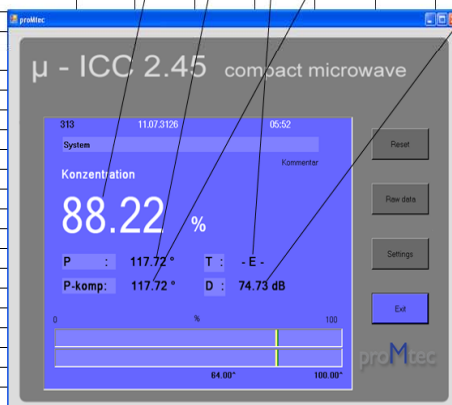
customer:



product:

dBm-section:

settings before		A0=	A1=	ref-point=	?	ref-cor=	0,0000	p-offset=	B0 dBm =	B1 dBm =									
calibration		Max	0,00	0,00	Min	360	0	Max	0,00	0,000	Min	-75	0,000						
Anzeige= A0+Phase*A1		Max	0,00	0,00	Min	360	0	Max	0,00	0,000	Min	-75	0,000						
newsettings:		A 0 =	#DIV/0!	A 1 =	#DIV/0!	Measuring range	#DIV/0!	#DIV/0!	T-ref =	TK1 =	#DIV/0!	T-ref_dBm =	T-K1_dBm =						
Sample	date	time	instrument Bx pMt	phase p (°)	temperature T (°C)	phase comp p-comp (°)	Level (dBm) raw	Level-Tk (-dBm)	Att (dB)	labor. (y axle)	labor. no used	p-comp (°) (x axle)	p-comp no used	instrument pMt calibrated	Δ (lab-instr)	dBm-komp (°) (x axle)	labor. (y axle)	dBm-komp no used	labor. No used
this line contains the copy fields I9 and K9. Later please delete the not used fields.																			
1												0,00	0,00	#WERT!	#WERT!	0,00			
2																			
3																			
4																			
5																			
6																			
7																			
8																			
9																			
10																			
11																			
12																			
13																			
14																			
15																			

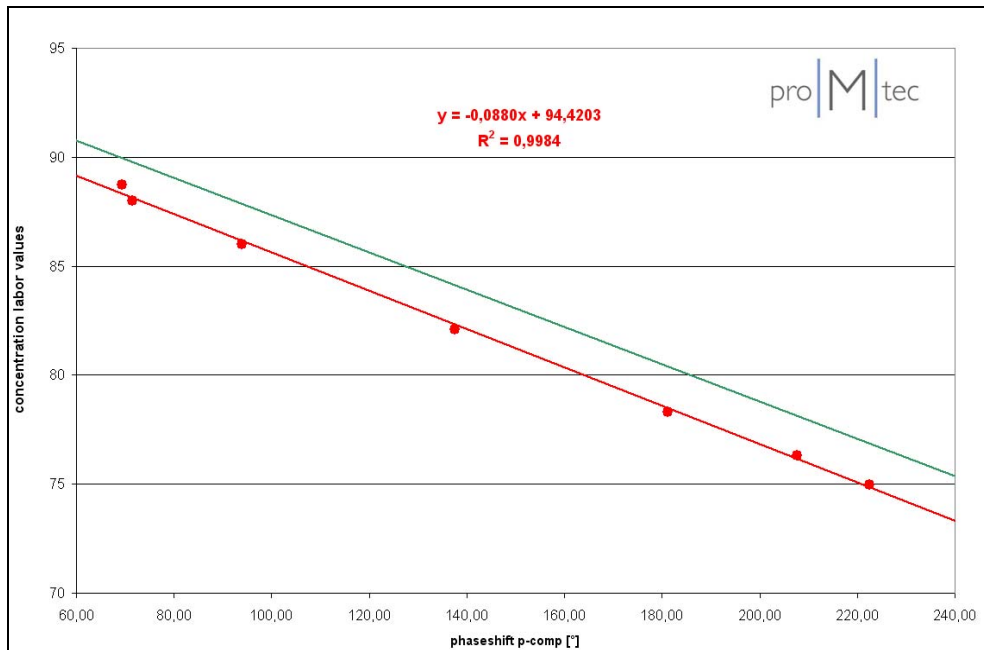


Microsoft Excel - IBN-Lab-Phase -dbm ICC-comp-2011April-EN.xls

customer:		proMtec																	
product:		dBm-section:																	
settings before		A0=	A1=	ref-point=	?	ref-cor=	0,0000	p-offset=	B0 dBm =	B1 dBm =									
calibration		Max	0,00	0,00	Min	360	0	Max	0,00	0,000	Min	-75	0,000						
Anzeige= A0+Phase*A1		Max	0,00	0,00	Min	360	0	Max	0,00	0,000	Min	-75	0,000						
newsettings:		A 0 =	44,9681	A 1 =	0,0615	Measuring range	44,97	67,10	T-ref =	70	TK1 =	3,00	0,99	T-ref_dBm =	70	T-K1_dBm =	-100		
Sample	date	time	instrument Bx pMt	phase p (°)	temperature T (°C)	phase comp p-comp (°)	Level (dBm) raw	Level-Tk (-dBm)	Att (dB)	labor. (y axle)	labor. no used	p-comp (°) (x axle)	p-comp no used	instrument pMt calibrated	Δ (lab-instr)	dBm-komp (°) (x axle)	labor. (y axle)	dBm-komp no used	labor. No used
this line contains the copy fields I9 and K9. Later please delete the not used fields.																			
1												0,00	0,00	#WERT!	#WERT!	0,00			
10	1	1.12.11	14:55	200,06	87,19		-54,10		36,95	61,40		148,49	148,49	54,10	-54,10	-36,91	61,40		
11	2		15:05	206,95	87,50		-54,18		37,86	56,80		154,45	154,45	54,46	-54,46	-36,68	56,80		
12	3		15:14	213,39	88,25		-53,83		38,23	52,80		158,64	158,64	54,72	-54,72	-35,68	52,80		
13	4		15:26	222,89	88,47		-53,35		38,55	47,70		167,48	167,48	55,26	-55,26	-34,68	47,70		
14	5		15:33	230,83	87,66		-52,94		38,58	44,70		177,85	177,85	55,90	-55,90	-35,26	44,70		
15	6		13:19	171,80	63,34		-55,32		33,54	67,80		191,78	191,78	56,76	-56,76	-61,98	67,80		
16	7																		
17	8																		
18	9																		
19	10																		
20	11																		
21	12																		
22	13																		
23	14																		
24	6																		
25	7																		

calibrating data / Bx with phase / Bx with -dBm / phase-comp with -dBm-comp /

→ The new settings can now be transferred to the evaluation unit. Therefore you have to put in the coefficients A0 and A1. Tk might also have to be readjusted.



### 7.3 Phase correction with level



As already mentioned, you might have to use the phase correction, if the measurement range seems to be too narrow.

For this purpose you can also obtain the coefficients B0, B1 from the excel file. Simply enter these additional values as well as another temperature compensation for the signal amplitude level measurement.

For the reference temperature you should use the same value as before (average temperature over the whole process).

For the temperature coefficient you can also use the same value before (in section 5.3.1 Temperature compensation), but you might have to readjust it.

→ Starting from „ **System** ” main menu, select „ **Sensor** ”, then „ **Calibration** ”, then „ **Phase correction with level** ” then switch from „ **OFF** ” to „ **ON** ” in order to activate temperature compensation, finally confirm with “ **OK** ” button. Then select „ **coefficients** ” and enter the values for B0 and B1. These values can be obtained from the excel file (as well as A0 and A1).

Now select „ **temperature compensation** ”, then „ **reference temp** ” and enter the desired temperature. Finally confirm with “ **OK** ” button.

Then finish by entering **Tk** as described above.



## 8 Sensor Settings: save and reload



Here you can save and load your settings, and reload the factory settings. This can be done in the “**Sensor**” section or in the “**Memory allocation**” section.

### 8.1 Sensor: Save settings, Load settings, Factory settings

#### SYSTEM / SENSOR / STANDARD SETTINGS

#### 8.1.1 Saving the configuration

- Starting from „**System**” main menu select „**Sensor**”, then select „**Standard settings**” and „**Save settings**”.

You can now choose one of 30 memory locations.

- Select the desired location. If the location is not occupied, the device displays: „**empty memory cell**”. Select „**save data set**” and confirm with “**OK**” button.

#### 8.1.2 Loading the saved configuration

- Starting from „**System**” main menu, select „**Sensor**”, then „**standard settings**” followed by „**load settings**”. Select a location (from 1 to 30). If the location is free, the device displays: „**empty memory cell**”. Then select „**load data set**” and confirm with “**OK**” button.

#### 8.1.3 Reloading factory settings

- Starting from „**System**” main menu please select „**Sensor**”. Then choose „**standard settings**”. Afterwards select „**load factory settings**”. Confirm by „**YES**” button and finally confirm with “**OK**” button.

### 8.2 Memory allocation: Load and Delete Internal and External Memory

#### SYSTEM / MEMORY ALLOCATION

#### 8.2.1 Copying of configuration

#### SYSTEM / MEMORY ALLOCATION / COPY DATA SET

- Starting from „**System**” main menu select „**Memory allocation**” then „**copy data set**”. Then choose the source configuration to be copied (locations 1 to 30).

Then choose the desired available memory location. Finally select „**start copy**” and then confirm with “**OK**” button.

## 8.2.2 Deleting of configuration

### SYSTEM / MEMORY ALLOCATION / DELETE DATA SET

- Select the configuration to be deleted (location 1 to 30). Select „**YES**” button and finally confirm with “**OK**” button.

## 8.2.3 Deleting of all memory

### SYSTEM / MEMORY ALLOCATION / DELETE COMPLETE MEMORY



You can delete simultaneously all additional memory (locations 1 to 30).

This is will not delete the sensor settings.

- Select „**delete complete memory**”, then „**delete internal memory**”. Afterwards it must be confirmed with “**OK**” button. Confirm by „**YES**” button and press “**OK**” again.

## 9 Moving of the measurement range

### SYSTEM / SENSOR / CALIBRATION

Sometimes the chosen measurement range is unsuitable for the measurement. There is a simple way to make it suitable.

Example:

There is a range from 65 to 90 %, but it is needed an upper limit of 95 %. Now you have the possibility to change it by phase offset. Therefore you need to calculate the required phase shift for the missing 5%.

Total measurement range = 90 % – 65 % = 25 %.  
Phase shift per 1 % =  $360^\circ / 25 \% = 14.4^\circ$  per 1%  
Offset =  $14.4^\circ \text{ per } 1\% * 5 \% = 72.35^\circ$

Here you get an offset of  $72.35^\circ$ . Add this value to the already existing phase offset.

→ Starting from „**System**” main menu, select „**Sensor**”, then „**Calibration**” and finally „**phase offset**” and add the above calculated offset to the phase offset.

This example extends the range upwards. In the same manner you can move it downwards. To extend the range to a lower minimum, subtract (instead of adding) the calculated offset from the existing phase offset.

## 10 Troubleshooting

### 10.1 PIN is not working

You can block the keyboard with PIN. Ensure that only qualified personnel know this PIN. If you don't remember the PIN, please contact your supervisor. If it should be necessary proMtec can override your PIN.

### 10.2 Constant offset

#### SYSTEM / SENSOR / CALIBRATION / COEFFICIENT



Maybe you will find a constant offset.

After saving the settings (see above), you can change the settings without any troubles.



To correct the offset, the best way is just to add the difference to **A0**.

This should not be given to the operator as a legal action, being that the BRIX-meter must be calibrated in the laboratory value and the seed point value is linked to temperature and purity. The seed point value should be set in the DCS system.

If you take more samples at a later date you can enter them into the actual spreadsheet and compare them with the old samples.



This is possible, if you haven't yet

- Given a new ref-point,
- Changed the ref-correction or
- Calibrated the Pt-100.

## 11 Technical specifications

Housing	Aluminium wall housing, protection IP65, Dimension 180x180x100 mm
Weights	<ul style="list-style-type: none"> <li>• IC-D1007_revA_AIO_DN65-100-45A ca. 11 kg</li> <li>• IC-D1006_revA_AIO_DN65-200-60AC ca. 13.5 kg</li> </ul>
Mounting	flange DN65 PN6, connection 4 x M12 on Ø130
Counter flange dimensions	Inner diameter Ø105 mm, outer diameter 200 mm
Power supply	24 V DC, max. 1000 mA
Microwave	Extremely stabile phase, attenuation and level measurement with PLL-synthesizer, 2.45GHz, transmission power 10 mW, 10 dBm
Microwave cable	2 x coaxial cables 50 ohms included
Output	4 – 20 mA isolated output for concentration and temperature, max. loop resistance 500 ohms
Data interface	USB 2.0 interface for software update, data output and calibration via PC
Environment temperature	0 to + 50 °C
Temperature compensation	Pt 100 with four-wire-system, M12 plug-in

# 12 Dimensional drawings

## 12.1.1 IC-D1007\_revA\_AIO\_DN65-100-45A

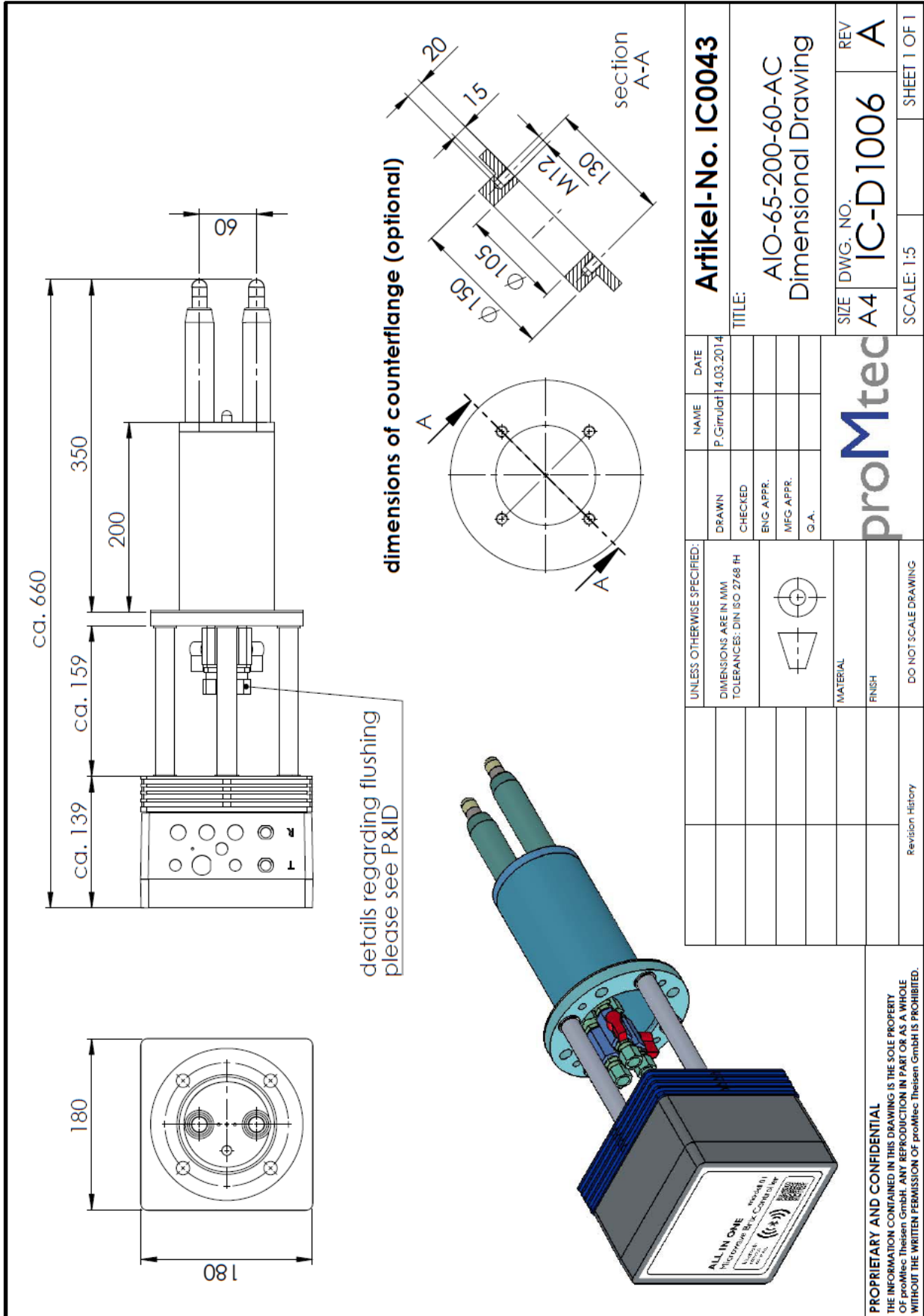
The drawing shows a technical drawing of a valve assembly. On the left, a 3D perspective view shows a blue valve body with a grey handle. The handle has a label with the text 'ALL IN ONE' and 'ProMtec'. The valve body has two ports. On the right, a 2D technical drawing shows the valve assembly with dimensions. The main dimensions are: total height ca. 560, height to the top of the valve body ca. 158, height to the top of the handle ca. 100, and height to the top of the handle base ca. 139. The handle has a diameter of 45. The valve body has a diameter of 180 and a width of 180. A section A-A is shown, with dimensions: 20, 15, 130, M12, 105, 150, 12, 38, and 12. The section A-A shows the internal structure of the valve. The drawing is titled 'Artikel-Nr.: IC0045' and 'AIO-65-100-45-A Dimensional Drawing'. The scale is 1:5. The drawing is sheet 1 of 1.

**dimensions of counterflange (optional)**

UNLESS OTHERWISE SPECIFIED: DIMENSIONS ARE IN MM TOLERANCES: DIN ISO 2768 H	NAME P. Girulab	DATE 14.03.2014
	DRAWN	CHECKED
MATERIAL	BNG APPR.	MFG APPR.
FINISH	G.A.	
DO NOT SCALE DRAWING	<b>proMtec</b>	
Revision History	SIZE   DWG. NO.   REV	A4   IC-D1007   A
	SCALE: 1:5	SHEET 1 OF 1

**PROPRIETARY AND CONFIDENTIAL**  
THE INFORMATION CONTAINED IN THIS DRAWING IS THE SOLE PROPERTY OF proMtec. IT IS NOT TO BE REPRODUCED IN PART OR AS A WHOLE WITHOUT THE WRITTEN PERMISSION OF proMtec. proMtec GmbH IS PROHIBITED.

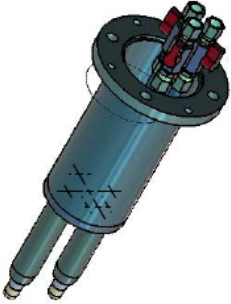
12.1.2 IC-D1006\_revA\_AIO\_DN65-200-60AC



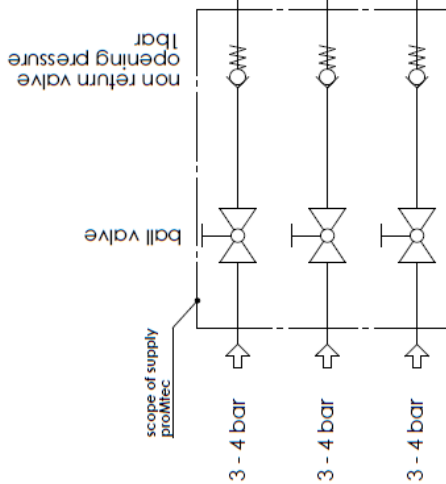
<b>Artikel-No. IC0043</b> TITLE: AIO-65-200-60-AC Dimensional Drawing		NAME P. Girulat	DATE 14.03.2014	REV A
UNLESS OTHERWISE SPECIFIED: DIMENSIONS ARE IN MM TOLERANCES: DIN ISO 2768 H	DRAWN CHECKED ENG. APPR. MFG. APPR. O.A.	proMtec	SIZE DWG. NO. A4 IC-D1006	SCALE: 1:5 SHEET 1 OF 1
MATERIAL FINISH	DO NOT SCALE DRAWING	Revision History		

**PROPRIETARY AND CONFIDENTIAL**  
 THE INFORMATION CONTAINED IN THIS DRAWING IS THE SOLE PROPERTY OF proMtec Theisen GmbH. ANY REPRODUCTION IN PART OR AS A WHOLE WITHOUT THE WRITTEN PERMISSION OF proMtec Theisen GmbH IS PROHIBITED.

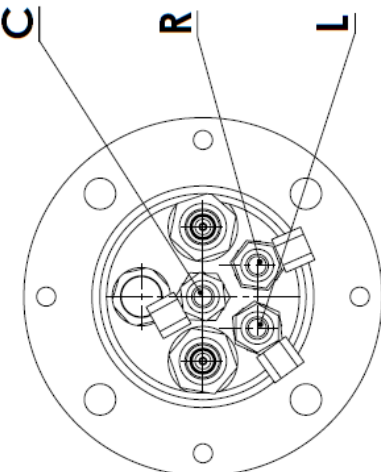
12.1.3 CIP (connection of water pipeline)



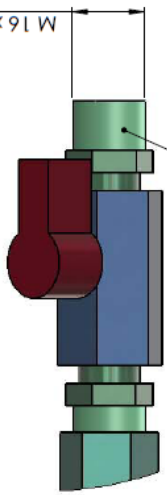
**C** (center pipe for space between sensors)  
**R** (right pipe for sensor)  
**L** (left pipe for sensor)



ball valve  
 non return valve  
 opening pressure 1bar  
 scope of supply proMtec  
 3 - 4 bar  
 3 - 4 bar  
 3 - 4 bar

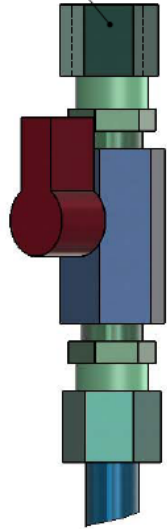


**C**  
**R**  
**L**



M 16 x 1,5  
 connection M 16 x 1,5

or with union nut with cutting ring for pipe 10 x 1 (union nut is included in shipment)



**Technical Specifications for installation:**

<b>flushing duration</b>	10 - 20 s depending on medium characteristics every 3 or 4 hours -
<b>flushing frequency</b>	depending on medium characteristics
<b>recommended flushing pressure for each pipe (C, R or L)</b>	3 - 4 bar
<b>flushing medium</b>	clean hot water
<b>opening pressure for non return valve</b>	1 bar
<b>connection for water</b>	M 16 x 1,5 / pipe 10 x 1

**PROPRIETARY AND CONFIDENTIAL**  
 THE INFORMATION CONTAINED IN THIS DRAWING IS THE PROPERTY OF proMtec. ANY REPRODUCTION IN PART OR AS A WHOLE WITHOUT THE WRITTEN PERMISSION OF proMtec IS STRICTLY PROHIBITED.

UNLESS OTHERWISE SPECIFIED: DIMENSIONS ARE IN MM DECIMALS FRACTIONS ANGULAR: MATCH BEND # TWO PLACE DECIMAL # THREE PLACE DECIMAL # TOLERANCING PRE: INTERPRET GEOMETRIC TOLERANCING PRE: MATERIAL: FINISH:	NAME: P. GRUBER DATE: 22.08.2013 DRAWN: [blank] CHECKED: [blank] ENG APPR: [blank] MFG APPR: [blank] G.A.: [blank]	proMtec	SCALE: -/-	SHEET 1 OF 1
Rev / Date	Description	Revision history	DO NOT SCALE DRAWING	

TITLE: Insertion Sensor CIP-System P+ID  
 SIZE DWG. NO.: TR-K1005  
 REV: A